

The Biomarker Catalogue

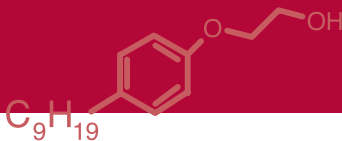


Page 373-383  
Surfactants and phenols



The collection of reference standards  
- 2008 -





# Surfactants and phenols

NEW  
focus

## Phenoethoxylates

### Internal standards

Deuterated and 13C labelled ethoxylates: Please inquire						
2327.14-100-IO	4-n-Octylphenol-d17	223.43		100µg/mL	isooctane	1 1mL
2414.15-K-5IP	4-n-Nonylphenol-2,3,5,6-d4-OD	225.39	[358730-95-7]	1000µg/mL	isopropanol	5 5mL
2414.15-K-5AC	4-n-Nonylphenol-2,3,5,6-d4-OD	225.39	[358730-95-7]	1000µg/mL	acetone	5 5mL

### 4-n-Octylphenol ethoxylates

1445.14-K-IO	4-n-Octylphenol	206.33	[1806-26-4]	1000µg/mL	isooctane	1 1mL
2286.16-K-IO	Ethylene glycol mono (p-n-octylphenyl)ether	4-n-Octylphenol EO	250.38	[51437-89-9]	1000µg/mL	isooctane 1 1mL
2287.18-K-IO	Diethylene glycol mono (p-n-octylphenyl)ether	4-n-Octylphenol 2EO	294.44	[51437-90-2]	1000µg/mL	isooctane 1 1mL
2309.20-K-IO	Triethylene glycol mono (p-n-octylphenyl)ether		338.49	[51437-91-3]	1000µg/mL	isooctane 1 1mL
3688.22-K-IO	Tetraethylene glycol mono (p-n-octylphenyl)ether		382.53	[51437-92-4]	1000µg/mL	isooctane 1 1mL
2367.4-KIT	n-Octylphenol EO Kit (Not including 3688.12)					Kit

### 4-tert-Octylphenol ethoxylates

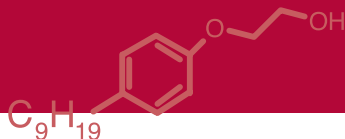
1446.14-K-IO	4-tert-Octylphenol	206.33	[140-66-9]	1000µg/mL	isooctane	1 1mL
3689.16-K-IO	4-tert-Octylphenol EO, Please inquire	250.38	[2315-67-5]	1000µg/mL	isooctane	1 1mL
3753.18-K-IO	4-tert-Octylphenol 2EO, Please inquire	294.43	[2315-61-9]	1000µg/mL	isooctane	1 1mL
3754.20-K-IO	4-tert-Octylphenol 3EO, Please inquire	338.48	[2315-62-0]	1000µg/mL	isooctane	1 1mL

### Nonylphenol ethoxylates (nonylisomer mixtures)

2044.15-K-IO	4-Nonylphenol, mixture of nonyl isomers	220.36	[84852-15-3]	1000µg/mL	isooctane	1 1mL
1833.17-K-IO	Ethylene glycol mono(p-nonylphenyl) ether	p-Nonylphenol EO	264.41	[104-35-8]	1000µg/mL	isooctane 1 1mL
1832.19-K-IO	Diethylene glycol mono(p-nonylphenyl) ether	p-Nonylphenol 2EO	308.47	[20427-84-3]	1000µg/mL	isooctane 1 1mL
1976.21-K-IO	Triethylene glycol mono(p-nonylphenyl) ether isomer mix	p-Nonylphenol 3EO	352.52	[51437-95-7]	1000µg/mL	Isooctane 1 1mL
1977.23-K-IO	Tetraethylene glycol mono(p-nonylphenyl) ether isomer mix	p-Nonylphenol 4-EO	396.57	[7311-27-5]	1000µg/mL	Isooctane 1 1mL
2366.5-KIT	Nonylphenol EO Kit					Kit

### 4-n-Nonylphenol ethoxylates

1450.15-K-IO	4-n-Nonylphenol	220.36	[104-40-5]	1000µg/mL	isooctane	1 1mL
1978.17-K-IO	Ethylene glycol mono(p-n-nonylphenyl) ether	p-n-Nonylphenol EO	264.41		1000µg/mL	Isooctane 1 1mL
1979.19-K-IO	Diethylene glycol mono(p-nonylphenyl) ether	p-n-Nonylphenol 2EO	308.47	[20427-84-3]	1000µg/mL	Isooctane 1 1mL
3755.3-KIT	n-Nonylphenol ethoxylates Kit					Kit
1980.17-K-IO	2-(4-Nonylphenoxy)acetic acid isomer mixture	278.39	[3115-49-9]	1000µg/mL	Isooctane	1 1mL
S-4097-100MG	Imbentin-N/020 (n=0-4)			neat		1 100mg
S-4098-100MG	Imbentin-N/040 (n=1-7)			neat		1 100mg
S-4099-100MG	Imbentin-N/040 (n=2-9)			neat		1 100mg
2368.3-KIT	Imbentin Kit					Kit



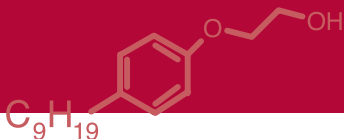
## Phenols

### F-Phenol internal standards

2057.6-K-IP	2-Fluorophenol	112.10	[367-12-4]	1000µg/mL	isopropanol	1	1mL
2057.6-1G	2-Fluorophenol	112.10	[367-12-4]	neat		1	1g
2059.7-K-IP	4-Fluoro-2-methylphenol	126.13	[452-72-2]	1000µg/mL	isopropanol	1	1mL
2059.7-1G	4-Fluoro-2-methylphenol	126.13	[452-72-2]	neat		1	1g
2058.7-K-IP	4-Fluoro-3-methylphenol	126.13	[452-70-0]	1000µg/mL	isopropanol	1	1mL
2058.7-1G	4-Fluoro-3-methylphenol	126.13	[452-70-0]	neat		1	1g

### Deuterated phenols

2415.15-K-IP	Bisphenol-A-2,2',6,6'-d4	232.32	[102438-62-0]	1000µg/mL	isopropanol	5	1mL
2416.15-K-IP	Bisphenol-A-3,3',5,5'-d4	232.32	[347841-41-2]	1000µg/mL	isopropanol	5	1mL
2417.15-K-IP	Bisphenol-A-d6	234.33	[86588-58-1]	1000µg/mL	isopropanol	5	1mL
2418.15-K-IP	Bisphenol-A-2,2',3,3',5,5',6,6'-d8	236.34	[92739-58-7]	1000µg/mL	isopropanol	5	1mL
2419.15-K-IP	Bisphenol-A-d16	244.39	[96210-87-6]	1000µg/mL	isopropanol	5	1mL
2427.6-K-IP	4-Bromophenol-2,3,5,6-d4	177.03	[152404-44-9]	1000µg/mL	isopropanol	5	1mL
2407.10-K-IP	4-n-Butylphenol-2,3,5,6-d4, OD	155.25		1000µg/mL	isopropanol	5	1mL
2282.10-K-IP	4-tert-Butyl-d9-phenol-2,3,5,6-d4	163.30	[225386-58-3]	1000µg/mL	isopropanol	5	1mL
2420.6-K-IP	2-Chlorophenol-3,4,5,6-d4	132.58	[93951-73-6]	1000µg/mL	isopropanol	5	1mL
2421.6-K-IP	4-Chlorophenol-2,3,5,6-d4, OD	132.58	[344298-84-6]	1000µg/mL	isopropanol	5	1mL
2511.7-K-IP	4-Chloro-3-methylphenol-2,6-d2	144.60	[93951-72-5]	1000µg/mL	isopropanol	1	1mL
2510.7-K-IP	4-Chloro-2-methylphenol-3,5,6-d3	145.60	[358731-13-2]	1000µg/mL	isopropanol	1	1mL
2393.7-K-IP	o-Cresol-d8	116.19	[203645-65-2]	1000µg/mL	isopropanol	5	1mL
2394.7-K-IP	m-Cresol-d8	116.19	[302911-90-6]	1000µg/mL	isopropanol	5	1mL
2280.7-K-T	p-Cresol-d8	115.18	[190780-66-6]	1000µg/mL	toluene	5	1mL
2428.6	2,4-Dibromophenol-3,5,6-d3	254.92		Please inquire			
2412.15-K-IP	2,6-Di-(tert-butyl-1-d1)-4-methyl-d3-phenol-3,5-d2	227.40		1000µg/mL	isopropanol	5	1mL
2283.15-K-IP	2,6-Di-(tert-butyl-d9)-4-methylphenol-3,5-d2, OD	241.48	[64502-99-4]	1000µg/mL	isopropanol	5	1mL
2413.15-K-IP	2,6-Di-tert-butyl-4-methylphenol-d24	244.50	[358730-95-7]	1000µg/mL	isopropanol	5	1mL
2422.6-K-IP	2,4-Dichlorophenol-3,5,6-d3	166.02	[93951-74-7]	1000µg/mL	isopropanol	5	1mL
2396.8-K-IP	2,4-Dimethylphenol-3,5,6-d3	125.19	[93951-75-8]	1000µg/mL	isopropanol	5	1mL
2397.8-K-IP	2,6-Dimethylphenol-3,5,6-d3, OD	126.19	[285132-85-6]	1000µg/mL	isopropanol	5	1mL
2398.8-K-IP	3,4-Dimethylphenol-2,5,6-d3, OD	126.19	[19031-58-4]	1000µg/mL	isopropanol	5	1mL
2395.8-K-IP	2,4-Dimethylphenol-d10	132.23	[93951-75-8]	1000µg/mL	isopropanol	5	1mL
2433.6-K-IP	2,4-Dinitrophenol-3,5,6-d3	187.13	[93951-77-0]	1000µg/mL	isopropanol	5	1mL
2052.8-K-IO	4-Ethylphenol-2,3,5,6-d4, OD	124.22	[340256-40-8]	1000µg/mL	Isooctane	5	1mL
2281.8-K-IP	4-Ethylphenol-d10	129.25	[352431-18-6]	1000µg/mL	isopropanol	5	1mL
2404.9-K-IP	2-Isopropylphenol-d12	148.27		1000µg/mL	isopropanol	5	1mL
2405.9-K-IP	3-Isopropylphenol-d12	148.27		1000µg/mL	isopropanol	5	1mL
2406.9-K-IP	4-Isopropylphenol-d12	148.27		1000µg/mL	isopropanol	5	1mL
2431.6-K-IP	2-Nitrophenol-3,4,5,6-d4	143.14	[93951-78-1]	1000µg/mL	isopropanol	5	1mL
2432.6-K-IP	4-Nitrophenol-2,3,5,6-d4	143.14	[93951-79-2]	1000µg/mL	isopropanol	5	1mL
2414.15-K-5IP	4-n-Nonylphenol-2,3,5,6-d4, OD	225.39	[358730-95-7]	1000µg/mL	isopropanol	5	5mL
2414.15-K-5AC	4-n-Nonylphenol-2,3,5,6-d4, OD	225.39	[358730-95-7]	1000µg/mL	acetone	5	5mL
2327.14-100-IO	4-n-Octylphenol-d17	223.43		100µg/mL	isooctane	1	1mL
2411.11-K-IP	4-n-Pentylphenol-d6	180.35		1000µg/mL	isopropanol	5	1mL
2390.6-K-IP	Phenol, OD	95.12	[1003-66-3]	1000µg/mL	isopropanol	5	1mL
2391.6-K-IP	Phenol-3,5-d2	96.13	[64045-87-0]	1000µg/mL	isopropanol	5	1mL
2392.6-K-IP	Phenol-2,4,6-d3, OD	98.14	[203645-65-2]	1000µg/mL	isopropanol	5	1mL
2279.6-K-T	Phenol-2,3,4,5,6-d5	99.14	[4165-62-2]	1000µg/mL	toluene	5	1mL
2349.6-K-IP	Phenol-d6	100.15	[13127-88-3]	1000µg/mL	isopropanol	5	1mL
2348.9-K-IP	4-n-Propylphenol-d12	148.27	[352431-21-1]	1000µg/mL	isopropanol	5	1mL
2430.6-K-IP	2,4,6-Tribromophenol-3,5-d2	332.81	[93951-78-1]	1000µg/mL	isopropanol	5	1mL
2424.6-K-IP	2,3,6-Trichlorophenol-4,5-d2	199.46	[93951-81-6]	1000µg/mL	isopropanol	5	1mL
2425.6-K-IP	2,4,5-Trichlorophenol-3,6-d2	199.46	[93951-82-7]	1000µg/mL	isopropanol	5	1mL
2426.6-K-IP	2,4,6-Trichlorophenol-3,5-d2	199.46	[93951-80-5]	1000µg/mL	isopropanol	5	1mL
2401.9-K-IP	2,3,5-Trimethylphenol-d11	147.26	[362049-46-5]	1000µg/mL	isopropanol	5	1mL



2402.9-K-IP	2,3,6-Trimethylphenol-d11	147.26	[347841-83-2]	1000µg/mL	isopropanol	5	1mL
2403.9-K-IP	2,4,6-Trimethylphenol-d11	147.26	[362049-45-4]	1000µg/mL	isopropanol	5	1mL

## C0-C1 Phenols

1427.6-K-W	Phenol	94.11	[108-95-2]	1000µg/mL	water	1	1mL
1427.6-1G	Phenol	94.11	[108-95-2]	neat		1	1g
1403.7-1G	o-Cresol	108.14	[95-48-7]	neat		1	1g
1404.7-1G	m-Cresol	108.14	[108-39-4]	neat		1	1g
1358.7-1G	p-Cresol	108.14	[106-44-5]	neat		1	1g
1637.4-KIT	Phenol C0-C1 Kit (neat)						Kit

## C2 Phenols

1405.8-1G	2,3-Dimethylphenol	122.17	[526-75-0]	neat		1	1g
1406.8-1G	2,4-Dimethylphenol	122.17	[105-67-9]	neat		1	1g
1407.8-1G	2,5-Dimethylphenol	122.17	[95-87-4]	neat		1	1g
1365.8-1G	2,6-Dimethylphenol	122.17	[576-26-1]	neat		1	1g
1409.8-1G	3,4-Dimethylphenol	122.17	[95-65-8]	neat		1	1g
1360.8-1G	3,5-Dimethylphenol	122.17	[108-68-9]	neat		1	1g
1410.8-1G	2-Ethylphenol	122.17	[90-00-6]	neat		1	1g
1364.8-1G	3-Ethylphenol	122.17	[620-17-7]	neat		1	1g
1411.8-1G	4-Ethylphenol	122.17	[123-07-9]	neat		1	1g
1638.9-KIT	Phenol C2 Kit						Kit

## C3 Phenols

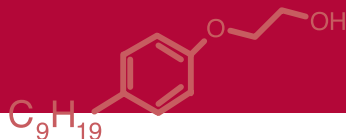
1412.9-1G	2,3,5-Trimethylphenol	136.20	[697-82-5]	neat		1	1g
1413.9-1G	2,3,6-Trimethylphenol	136.20	[2416-94-6]	neat		1	1g
1362.9-1G	2,4,6-Trimethylphenol	Mesitol	136.20	[527-60-6]	neat	1	1g
1414.9-250MG	3,4,5-Trimethylphenol	136.20	[527-54-8]	neat		1	250mg
1516.9-K-IO	3-Ethyl-5-methylphenol	136.20	[698-71-5]	1000µg/mL	isooctane	1	1mL
1418.9-1G	2-Isopropylphenol	136.20	[88-69-7]	neat		1	1g
1419.9-250MG	3-Isopropylphenol	136.20	[618-45-1]	neat		1	250mg
1420.9-1G	4-Isopropylphenol	136.20	[99-89-8]	neat		1	1g
1415.9-1G	2-n-Propylphenol	136.20	[644-35-9]	neat		1	1g
1416.9-1G	3-n-Propylphenol	136.20	[621-27-2]	neat		1	1g
1417.9-1G	4-n-Propylphenol	136.20	[645-56-7]	neat		1	1g
1639.11-KIT	Phenol C3 Kit						Kit

## C4 Phenols

1357.10-1G	4-n-Butylphenol	150.22	[1638-22-8]	neat		1	1g
1421.10-1G	2-sec-Butylphenol	150.22	[89-72-5]	neat		1	1g
1422.10-1G	4-sec-Butylphenol	150.22	[99-71-8]	neat		1	1g
1359.10-1G	2-tert-Butylphenol	150.22	[88-18-6]	neat		1	1g
1361.10-1G	3-tert-Butylphenol	150.22	[585-34-2]	neat		1	1g
1423.10-1G	4-tert-Butylphenol	150.22	[98-54-4]	neat		1	1g
1428.10-1G	2-Isopropyl-5-methylphenol	Thymol	150.22	[89-83-8]	neat	1	1g
1424.10-1G	4-Isopropyl-3-methylphenol		150.22	[3228-02-2]	neat	1	1g
1425.10-250MG	5-Isopropyl-2-methylphenol	Carvacrol	150.22	[499-75-2]	neat	1	250mg
1426.10-1G	5-Isopropyl-3-methylphenol		150.22	[3228-03-3]	neat	1	1g
1640.10-KIT	Phenol C4 Kit						Kit

## C5 Phenols

1363.11-250MG	4-n-Pentylphenol	164.25	[14938-35-3]	neat		1	250mg
1517.11-K-IO	2-(1-Methylbutyl)phenol	164.25	[87-26-3]	1000µg/mL	isooctane	1	1mL
1518.11-K-IO	4-Isopentylphenol	164.25	[1805-61-4]	1000µg/mL	isooctane	1	1mL
1433.11-1G	4-tert-Amylphenol	164.25	[80-46-6]	neat		1	1g
1430.11-1G	2-tert-Butyl-4-methylphenol	164.25	[2409-55-4]	neat		1	1g
1431.11-1G	2-tert-Butyl-5-methylphenol	164.25	[88-60-8]	neat		1	1g



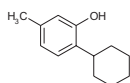
1432.11-1G	2-tert-Butyl-6-methylphenol	164.25	[2219-82-1]	neat		1	1g
1429.11-1G	4-tert-Butyl-2-methylphenol	164.25	[98-27-1]	neat		1	1g
1519.11-K-IO	5-tert-Butyl-2-methylphenol	164.25	[5781-02-2]	1000µg/mL	isooctane	1	1mL
1641.9-KIT	Phenol C5 Kit						Kit

## C6 Phenols

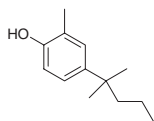
1806.12-1G	2-Phenylphenol	170.21	[90-43-7]	neat		1	1g
1807.12-1G	3-Phenylphenol	170.21	[580-51-8]	neat		1	1g
1808.12-1G	4-Phenylphenol	170.21	[92-69-3]	neat		1	1g
1439.12-1G	2-/4-Cyclohexylphenol	176.26	[26570-85-4]	neat		1	1g
1438.12-1G	4-Cyclohexylphenol	176.26	[1131-60-8]	neat		1	1g
1795.12-K-IO	2,4-Diisopropylphenol	178.28	[2934-05-6]	1000µg/mL	isooctane	1	1mL
1520.12-K-IO	2,5-Diisopropylphenol	178.28	[35946-91-9]	1000µg/mL	isooctane	1	1mL
1434.12-250MG	2,6-Diisopropylphenol	178.28	[2078-54-8]	neat		1	250mg
1436.12-1G	2-tert-Butyl-4,6-dimethylphenol	178.28	[1879-09-0]	neat		1	1g
1435.12-1G	2-tert-Butyl-4-ethylphenol	178.28	[96-70-8]	neat		1	1g
1437.12-1G	4-n-Hexylphenol	178.28	[2446-69-7]	neat		1	1g
1642.11-KIT	Phenol C6 Kit						Kit

## C7 Phenols

2388.13-1G	2-Benzylphenol	184.24	[28994-41-4]	neat		1	1g
2389.13-1G	4-Benzylphenol	184.24	[101-53-1]	neat		1	1g
1503.13-250MG	2-Cyclohexyl-5-methylphenol	190.29	[1596-13-0]	neat		1	250mg



2908.13-K-IO	2-Methyl-4-tert-hexylphenol	192.30	[6793-80-2]	1000µg/mL	isooctane	1	1mL
--------------	-----------------------------	--------	-------------	-----------	-----------	---	-----



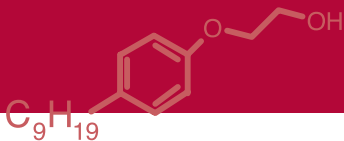
1440.13-1G	4-n-Heptylphenol	192.30	[1987-50-4]	neat		1	1g
1643.5-KIT	Phenol C7 Kit						Kit

## C8 Phenols

2439.14-K-IP	2-Benzyl-4-methylphenol	198.27	[716-96-1]	1000µg/mL	isopropanol	1	1mL
1515.14-K-IO	2,4-Di-sec-butylphenol	206.33	[1849-18-9]	1000µg/mL	isooctane	1	1mL
1441.14-1G	2,6-Di-sec-butylphenol	206.33	[5510-99-6]	neat		1	1g
1442.14-1G	2,4-Di-tert-butylphenol	206.33	[96-76-4]	neat		1	1g
1443.14-1G	2,6-Di-tert-butylphenol	206.33	[128-39-2]	neat		1	1g
1444.14-1G	3,5-Di-tert-butylphenol	206.33	[1138-52-9]	neat		1	1g
1445.14-1G	4-n-Octylphenol	206.33	[1806-26-4]	neat		1	1g
1446.14-1G	4-tert-Octylphenol	206.33	[140-66-9]	neat		1	1g
1644.8-KIT	Phenol C8 Kit						Kit

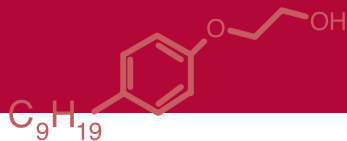
## C9 Phenols

1448.15-K-IO	2,6-Di-tert-butyl-4-methylphenol						
	(2,6-Bis(1,1-dimethylethyl)-4-methylphenol)	220.36	[128-37-0]	1000µg/mL	isooctane	1	1mL
1521.15-K-IO	4,6-Di-tert-butyl-2-methylphenol	220.36	[616-55-7]	1000µg/mL	isooctane	1	1mL
1522.15-K-IO	2-Methyl-4-tert-octylphenol	220.36	[2219-84-3]	1000µg/mL	isooctane	1	1mL
1450.15-5K-IO	4-n-Nonylphenol	220.36	[104-40-5]	5000µg/mL	isooctane	1	1mL
2044.15-K-IO	4-Nonylphenol, mixture of isomers	220.36	[84852-15-3]	1000µg/mL	isooctane	1	1mL
1450.15-K-IO	4-n-Nonylphenol	220.36	[104-40-5]	1000µg/mL	isooctane	1	1mL
2365.15-K-IO	4-Nonylphenol, mixture of isomers, Type B	220.36	[84852-15-3]	1000µg/mL	isooctane	1	1mL
1645.6-KIT	Phenol C9 Kit						Kit



## C10+ Phenols

1687.16-1G	4-tert-Butyl-2-phenylphenol	226.32	[577-92-4]	neat		1	1g
1455.16-250MG	2,4-Bis(1-methylbutyl)phenol	234.39	[96-94-6]	neat		1	250mg
1523.16-K-IO	2,4-Dimethyl-6-isooctylphenol	234.39	[198220-45-0]	1000µg/mL	isooctane	1	1mL
1453.16-1G	2,4-Di-tert-pentylphenol	234.39	[120-95-6]	neat		1	1g
1452.16-1G	2,6-Di-tert-butyl-4-ethylphenol	234.39	[4130-42-1]	neat		1	1g
1454.16-100MG	4-tert-Butyl-2,6-diisopropylphenol	234.39	[57354-65-1]	neat		1	100mg
2436.18-K-IO	2-n-Dodecylphenol	262.44	[5284-29-7]	1000µg/mL	isooctane	1	1mL
2437.19-K-IO	2-n-Dodecyl-p-cresol	276.47	[25912-91-8]	1000µg/mL	isooctane	1	1mL
2438.19-K-IO	4-n-Dodecyl-o-cresol	276.47	[29665-59-6]	1000µg/mL	isooctane	1	1mL
1646.9-KIT	Phenol C10 Kit						Kit

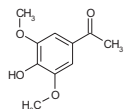


## Other phenols

2307.10

### Acetosyringone

[2478-38-8] MW 196.20



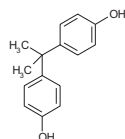
2307.10-K-IO

1000µg/mL isooctane, 1x1mL

1220.15

### Bisphenol A

[80-05-7] MW 228.29



1220.15-K-IO

1000µg/mL isooctane, 1x1mL

2369.6

### Catechol

[120-80-9] MW 110.11



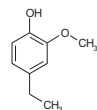
2369.6-K-IO

1000µg/mL isooctane, 1x1mL

2374.9

### 4-Ethylguaiacol

[2785-89-9] MW 152.19



2374.9-K-IO

1000µg/mL isooctane, 1x1mL

2372.7

### Guaiacol

[90-05-1] MW 124.14



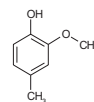
2372.7-K-IO

1000µg/mL isooctane, 1x1mL

2373.8

### 4-Methylguaiacol

[93-51-6] MW 138.17



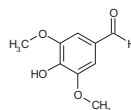
2373.8-K-IO

1000µg/mL isooctane, 1x1mL

2371.9

### Syringaldehyde

[134-96-3] MW 182.18



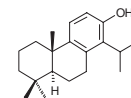
2371.9-K-IO

1000µg/mL isooctane, 1x1mL

2108.20

### Totarol

[511-15-9] MW 286.46



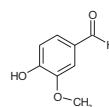
2108.20-K-IO

1000µg/mL isooctane, 1x1mL

2370.8

### Vanillin

[121-33-5] MW 152.15



2370.8-K-IO

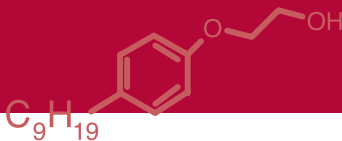
1000µg/mL isooctane, 1x1mL

2375.9

### Other Phenols kit

2375.9-KIT

Kit

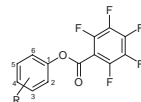


## Anisols



2474.7-K-IP	2,6-Dibromoanisole	265.93	[38603-09-7]	1000µg/mL	isopropanol	1	1mL
2456.7-K-IP	2,4-Dichloro-6-nitroanisole	222.03	[37138-82-2]	1000µg/mL	isopropanol	1	1mL
2455.7-K-IP	2,6-Dichloro-4-nitroanisole	222.03	[17742-69-7]	1000µg/mL	isopropanol	1	1mL
2457.9-K-IP	2,6-Dimethyl-4-anisole	181.19	[14804-39-8]	1000µg/mL	isopropanol	1	1mL
2451.7-K-IP	2,4-Dinitroanisole	198.14	[119-27-7]	1000µg/mL	isopropanol	1	1mL
2452.7-K-IP	2,5-Dinitroanisole	198.14	[3962-77-4]	1000µg/mL	isopropanol	1	1mL
2453.7-K-IP	2,6-Dinitroanisole	198.14	[3535-67-9]	1000µg/mL	isopropanol	1	1mL
2454.8-K-IP	2,4-Dinitro-6-methylanisole	212.16	[29027-13-2]	1000µg/mL	isopropanol	1	1mL
2449.8-K-IP	3-Methyl-2-nitroanisole	167.17	[5345-42-6]	1000µg/mL	isopropanol	1	1mL
2447.8-K-IP	3-Methyl-4-nitroanisole	167.17	[5367-32-8]	1000µg/mL	isopropanol	1	1mL
2448.8-K-IP	4-Methyl-2-nitroanisole	167.17	[119-10-8]	1000µg/mL	isopropanol	1	1mL
2450.8-K-IP	5-Methyl-2-nitroanisole	167.17	[38512-82-2]	1000µg/mL	isopropanol	1	1mL
2442.7-K-IP	2-Nitroanisole	153.14	[91-23-6]	1000µg/mL	isopropanol	1	1mL
2443.7-K-IP	3-Nitroanisole	153.14	[555-03-3]	1000µg/mL	isopropanol	1	1mL
2444.7-K-IP	4-Nitroanisole	153.14	[100-17-4]	1000µg/mL	isopropanol	1	1mL
2475.7-K-IP	2,4,6-Tribromoanisole	344.83	[607-99-8]	1000µg/mL	isopropanol	1	1mL
2476.7-K-IP	2,3,6-Trichloroanisole	211.48	[50375-10-5]	1000µg/mL	isopropanol	1	1mL
3121.17-KIT	Anisole Kit						Kit

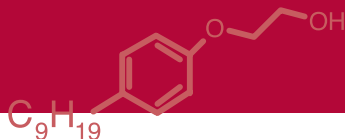
## Phenol PFB (perfluorobenzoyl) derivatives



2092.13-K-IP	2,4-Dibromophenol-PFB	445.97		1000µg/mL	isopropanol	1	1mL
2092.13-K-IP	2,4-Dibromophenol-PFB	445.97		1000µg/mL	isopropanol	5	1mL
2092.13-K-5IP	2,4-Dibromophenol-PFB	445.97		1000µg/mL	isopropanol	1	5mL
2469.13-K-IP	2,5-Dibromophenol-PFB	445.97		1000µg/mL	isopropanol	1	1mL
2093.15-K-IP	4-Ethylphenol-d4-PFB	320.25	[100-58-8]	1000µg/mL	isopropanol	1	1mL
2502.15-K-IP	4-Ethylphenol-d9-PFB	325.28		1000µg/mL	isopropanol	1	1mL
2088.13-K-IP	2-Fluorophenol-PFB	306.17		1000µg/mL	isopropanol	1	1mL
2090.14-K-IP	4-Fluoro-2-methylphenol-PFB	320.19		1000µg/mL	isopropanol	1	1mL
2089.14-K-IP	4-Fluoro-3-methylphenol-PFB	320.19		1000µg/mL	isopropanol	1	1mL
2091.13-K-IP	2,4,6-Tribromophenol-PFB	524.86		1000µg/mL	isopropanol	1	1mL
2091.13-K-5IP	2,4,6-Tribromophenol-PFB	524.86		1000µg/mL	isopropanol	1	5mL
3122.8-KIT	Phenol PFB derivative Kit						Kit

## Nitrophenols

2747.6-K-IP	2-Amino-5-nitrophenol	154.13	[121-88-0]	1000µg/mL	isopropanol	1	1mL	
2144.10-K-IO	2-sec-Butyl-4,6-dinitrophenol	Dinoseb	240.22	[88-85-7]	1000µg/mL	isooctane	1	1mL
2483.10-100	2-tert-Butyl-4,6-dinitrophenol	Dinoterb	240.22	[1420-07-1]	100µg/mL	c.hexane or ac.nitrile	1	1mL
2133.12-K-IP	2-Cyclohexyl-4,6-dinitrophenol	266.26	[131-89-5]	1000µg/mL	isopropanol	1	1mL	
2466.6-K-IP	2,4-Dichloro-6-nitrophenol	208.00	[609-89-2]	1000µg/mL	isopropanol	1	1mL	
2467.6-K-IP	2,6-Dichloro-4-nitrophenol	208.00	[618-80-4]	1000µg/mL	isopropanol	1	1mL	
2465.8-K-IP	2,6-Dimethyl-4-nitrophenol	167.17	[2423-71-4]	1000µg/mL	isopropanol	1	1mL	
2083.7-K-IP	4,6-Dinitro-2-methylphenol (2-Methyl-4,6-dinitrophenol)	198.14	[534-52-1]	1000µg/mL	isopropanol	1	1mL	
2079.6-K-T	2,4-Dinitrophenol	184.11	[51-28-5]	1000µg/mL	toluene	1	1mL	
2462.6-K-IP	2,5-Dinitrophenol	184.11	[329-71-5]	1000µg/mL	isopropanol	1	1mL	
2463.6-K-IP	2,6-Dinitrophenol	184.11	[573-56-8]	1000µg/mL	isopropanol	1	1mL	
2481.9-K-IP	2-Ethoxymethyl-4,6-dinitrophenol	Etinofen	242.19	[2544-94-7]	1000µg/mL	isopropanol	1	1mL
2461.7-K-IP	3-Methyl-2-nitrophenol	153.14	[4920-77-8]	1000µg/mL	isopropanol	1	1mL	
2459.7-K-IP	3-Methyl-4-nitrophenol	153.14	[2581-34-2]	1000µg/mL	isopropanol	1	1mL	
2458.7-K-IP	4-Methyl-2-nitrophenol	153.14	[119-33-5]	1000µg/mL	isopropanol	1	1mL	
2460.7-K-IP	5-Methyl-2-nitrophenol	153.14	[700-38-9]	1000µg/mL	isopropanol	1	1mL	
2085.6-K-T	2-Nitrophenol	139.11	[88-75-5]	1000µg/mL	toluene	1	1mL	
2086.6-K-T	3-Nitrophenol	139.11	[554-84-7]	1000µg/mL	toluene	1	1mL	
2087.6-K-ME	4-Nitrophenol	139.11	[100-02-7]	1000µg/mL	methanol	1	1mL	
2385.19-KIT	Nitrophenol Kit						Kit	



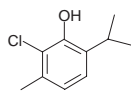
## Aminophenols

2519.6-K-ME	4-Aminophenol	109.13	[123-30-8]	1000µg/mL	methanol	1	1mL
2519.6-500MG	4-Aminophenol	109.13	[123-30-8]	neat		1	500mg

## Chlorophenols

### Monochlorophenols

2062.6-K-IP	2-Chlorophenol	128.56	[95-57-8]	1000µg/mL	isopropanol	1	1mL
2067.6-K-IP	3-Chlorophenol	128.56	[108-43-0]	1000µg/mL	isopropanol	1	1mL
2068.6-K-IP	4-Chlorophenol	128.56	[106-48-9]	1000µg/mL	isopropanol	1	1mL
2063.7-K-IP	2-Chloro-5-methylphenol	142.59	[615-74-7]	1000µg/mL	isopropanol	1	1mL
2070.7-K-IP	4-Chloro-2-methylphenol	142.59	[1570-64-5]	1000µg/mL	isopropanol	1	1mL
2071.7-K-IP	4-Chloro-3-methylphenol	142.59	[59-50-7]	1000µg/mL	isopropanol	1	1mL
2440.10-K-IP	2-Chloro-4-tert-butylphenol	184.67	[98-28-2]	1000µg/mL	isopropanol	1	1mL
2378.10-K-IP	6-Chloro-5-methyl-2-(1-methylethyl)phenol	184.67	[89-68-9]	1000µg/mL	isopropanol	1	1mL



2500.11-K-IP	2-Cyclopentyl-4-chlorophenol	196.68	[13347-42-7]	1000µg/mL	isopropanol	1	1mL
2441.13-K-IP	4-Chloro-2-benzylphenol	218.69	[120-32-1]	1000µg/mL	isopropanol	1	1mL
2446.10-KIT	Monochlorophenol Kit						Kit

### Dichlorophenols

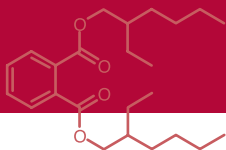
2066.6-K-IP	2,3-Dichlorophenol	163.00	[576-24-9]	1000µg/mL	isopropanol	1	1mL
2064.6-K-IP	2,4-Dichlorophenol	163.00	[120-83-2]	1000µg/mL	isopropanol	1	1mL
2065.6-K-IP	2,5-Dichlorophenol	163.00	[583-78-8]	1000µg/mL	isopropanol	1	1mL
2069.6-K-IP	2,6-Dichlorophenol	163.00	[87-65-0]	1000µg/mL	isopropanol	1	1mL
2080.6-K-IP	3,4-Dichlorophenol	163.00	[95-77-2]	1000µg/mL	isopropanol	1	1mL
2078.6-K-IP	3,5-Dichlorophenol	163.00	[591-35-5]	1000µg/mL	isopropanol	1	1mL
2742.7-K-IP	2,4-Dichloro-6-methylphenol	177.03	[1570-65-6]	1000µg/mL	isopropanol	1	1mL
2379.8-K-IP	2,4-Dichloro-3,5-dimethylphenol	191.06	[133-53-9]	1000µg/mL	isopropanol	1	1mL
2738.10-K-IP	2,5-Dichloro-4-tert-butylphenol	219.11	[52780-22-0]	1000µg/mL	isopropanol	1	1mL
2380.9-KIT	Dichlorophenol Kit						Kit

### Trichlorophenols

2077.6-K-IP	2,3,4-Trichlorophenol	197.45	[15950-66-0]	1000µg/mL	isopropanol	1	1mL
2073.6-K-IP	2,3,5-Trichlorophenol	197.45	[933-78-8]	1000µg/mL	isopropanol	1	1mL
2072.6-K-IP	2,3,6-Trichlorophenol	197.45	[933-75-5]	1000µg/mL	isopropanol	1	1mL
2075.6-K-IP	2,4,5-Trichlorophenol	197.45	[95-95-4]	1000µg/mL	isopropanol	1	1mL
2076.6-K-IP	2,4,6-Trichlorophenol	197.45	[88-06-2]	1000µg/mL	isopropanol	1	1mL
2082.6-K-IP	3,4,5-Trichlorophenol	197.45	[609-19-8]	1000µg/mL	isopropanol	1	1mL
2381.6-KIT	Trichlorophenol Kit						Kit

### Tetra-/ Pentachlorophenols

2081.6-K-IP	2,3,4,5-Tetrachlorophenol	231.89	[4901-51-3]	1000µg/mL	isopropanol	1	1mL
2149.6-K-IO	2,3,4,6-Tetrachlorophenol	231.89	[58-90-2]	1000µg/mL	isooctane	1	1mL
2074.6-K-IP	2,3,5,6-Tetrachlorophenol	231.89	[935-95-5]	1000µg/mL	isopropanol	1	1mL
2084.6-K-IO	Pentachlorophenol	266.34	[87-86-5]	1000µg/mL	isooctane	1	1mL
2084.6-K-IP	Pentachlorophenol	266.34	[87-86-5]	1000µg/mL	isopropanol	1	1mL
2386.4-KIT	Tetra/, Pentachlorophenol Kit						Kit



## Bromophenols

3822.6-K-IP	2-Bromophenol	173.01	[95-56-7]	1000µg/mL	isopropanol	1	1mL
2383.6-K-IP	4-Bromophenol	173.01	[106-41-2]	1000µg/mL	isopropanol	1	1mL
3721.6-K-IP	2,3-Dibromophenol	251.91	[57383-80-9]	1000µg/mL	isopropanol	1	1mL
2061.6-K-IP	2,4-Dibromophenol	251.91	[615-58-7]	1000µg/mL	isopropanol	1	1mL
2470.6-K-IP	2,5-Dibromophenol	251.91	[28165-52-8]	1000µg/mL	isopropanol	1	1mL
2472.6-K-IP	2,6-Dibromophenol	251.91	[608-33-3]	1000µg/mL	isopropanol	1	1mL
2507.6-K-IP	2,3,4-Tribromophenol	330.80	[138507-65-0]	1000µg/mL	isopropanol	1	1mL
2471.6-K-IP	2,3,6-Tribromophenol	330.80	[28165-57-3]	1000µg/mL	isopropanol	1	1mL
2508.6-K-IP	2,4,5-Tribromophenol	330.80	[14401-61-7]	1000µg/mL	isopropanol	1	1mL
2060.6-K-IP	2,4,6-Tribromophenol	330.80	[118-79-6]	1000µg/mL	isopropanol	1	1mL
2060.6-5K-5IP	2,4,6-Tribromophenol	330.80	[118-79-6]	5000µg/mL	isopropanol	1	5mL
2509.6-K-IP	2,3,4,6-Tetrabromophenol	409.70	[14400-94-3]	1000µg/mL	isopropanol	1	1mL
2672.6-50-IO	Pentabromophenol	488.59	[608-71-9]	50µg/mL	isooctane	1	1mL
2384.13-KIT	Bromophenol Kit						Kit

## Bromoanisols

3823.7-K-IP	3-Bromoanisole	265.93	[2398-37-0]	1000µg/mL	isopropanol	1	1mL
2473.7-K-IP	2,4-Dibromoanisole	265.93	[21702-84-1]	1000µg/mL	isopropanol	1	1mL
2474.7-K-IP	2,6-Dibromoanisole	265.93	[38603-09-7]	1000µg/mL	isopropanol	1	1mL
2475.7-K-IP	2,4,6-Tribromoanisole	344.83	[607-99-8]	1000µg/mL	isopropanol	1	1mL
8105.4-KIT	Bromoanisole Kit						Kit

## Phthalates and adipates

### Deuterated phthalates

**NEW**

2478.10-100-IO	Dimethyl phthalate-3,4,5,6-d4	198.21	[93951-89-4]	100µg/mL	isooctane	1	1mL
2478.10-100-IO	Dimethyl phthalate-3,4,5,6-d4	198.21	[93951-89-4]	100µg/mL	isooctane	5	1mL
2892.12-K-IO	Diethyl phthalate-3,4,5,6-d4	226.27	[93952-12-6]	1000µg/mL	isooctane	1	1mL
3123.16-100-IO	Di-iso-butyl phthalate-3,4,5,6-d4	282.37	[358730-88-8]	100µg/mL	isooctane	5	1mL
2479.16-100-IO	Di-n-butyl phthalate-3,4,5,6-d4	282.38	[93952-11-5]	100µg/mL	isooctane	1	1mL
2479.16-100-IO	Di-n-butyl phthalate-3,4,5,6-d4	282.38	[93952-11-5]	100µg/mL	isooctane	5	1mL
2893.18-100-IO	Di-n-pentyl phthalate-3,4,5,6-d4	310.43	[358730-89-9]	100µg/mL	isooctane	1	1mL
2893.18-K-IO	Di-n-pentyl phthalate-3,4,5,6-d4	310.43	[358730-89-9]	1000µg/mL	isooctane	1	1mL
3125.18-100-IO	Benzyl-n-butyl phthalate-3,4,5,6-d4	316.39	[93951-88-3]	100µg/mL	isooctane	5	1mL
2361.24-100-IO	Di-n-octyl phthalate-3,4,5,6-d4	394.59	[93952-13-7]	100µg/mL	isooctane	5	1mL
2894.24-K-IO	Bis(2-ethylhexyl) phthalate-3,4,5,6-d4	394.59	[93951-87-2]	1000µg/mL	isooctane	1	1mL

### Phthalates

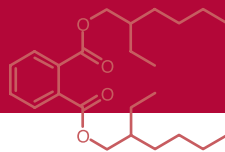
**NEW**

#### Monoalkylphthalates (metabolites)

3805.9-K-IO	Monomethyl phthalate	180.16	[4376-18-5]	1000µg/mL	isooctane	1	1mL
3806.10-K-IO	Monoethyl phthalate	194.00	[2306-33-4]	Please inquire			
3807.12-K-IO	Monobutyl phthalate	222.24	[131-70-4]	1000µg/mL	isooctane	1	1mL
3808.15-K-IO	Monobenzylphthalate	256.26	[2528-16-7]	1000µg/mL	isooctane	1	1mL
3590.15-K-IO	Mono-n-hexyl phthalate		[24539-57-9]	1000µg/mL	isooctane	1	1mL
3809.16-K-IO	Mono(2-ethylhexyl) phthalate	278.35	[4376-20-9]	1000µg/mL	isooctane	1	1mL
3962.4-KIT	Monoalkyl phthalate Kit						Kit

#### Dialkyl phthalates

2094.10-10MG	Dimethyl phthalate	194.19	[131-11-3]	neat		1	10mg
2094.10-100MG	Dimethyl phthalate	194.19	[131-11-3]	neat		1	100mg
1225.12-10MG	Diethyl phthalate	222.24	[84-66-2]	neat		1	10mg
2102.16-100-NO	Di-iso-butyl phthalate	278.35	[84-69-5]	100mg/mL	nonane	1	1mL
2102.16-10MG	Di-iso-butyl phthalate	278.35	[84-69-5]	neat		1	10mg



2102.16-100MG	Di-iso-butyl phthalate	278.35	[84-69-5]	neat		1	100mg
1226.16-10MG	Di-n-butyl phthalate	278.35	[84-74-2]	neat		1	10mg
1226.16-100MG	Di-n-butyl phthalate	278.35	[84-74-2]	neat		1	100mg
2097.14-10MG	Di(2-methoxyethyl) phthalate	282.30	[34006-76-3]	neat		1	10mg
2097.14-100MG	Di(2-methoxyethyl) phthalate	282.30	[34006-76-3]	neat		1	100mg
2099.18-10MG	Diamyl phthalate	306.41	[131-18-1]	neat		1	10mg
2099.18-100MG	Diamyl phthalate	306.41	[131-18-1]	neat		1	100mg
2096.16-10MG	Di(2-ethoxyethyl) phthalate	310.35	[605-54-9]	neat		1	10mg
2096.16-100MG	Di(2-ethoxyethyl) phthalate	310.35	[605-54-9]	neat		1	100mg
1227.19-10MG	Butylbenzyl phthalate	312.37	[85-68-7]	neat		1	10mg
2055.20-100-HX	Diphenyl isophthalate	318.33	[744-45-6]	100µg/mL	hexane	1	1mL
2056.20-100-HX	Diphenyl phthalate	318.33	[84-62-8]	100µg/mL	hexane	1	1mL
2100.20-10MG	Dicyclohexyl phthalate	330.43	[84-61-7]	neat		1	10mg
2100.20-100MG	Dicyclohexyl phthalate	330.43	[84-61-7]	neat		1	100mg
2098.20-10MG	Di(4-methyl-2-pentyl) phthalate	334.46	[259139-51-0]	neat		1	10mg
2098.20-100MG	Di(4-methyl-2-pentyl) phthalate	334.46	[259139-51-0]	neat		1	100mg
2101.20-10MG	Di-n-hexyl phthalate	334.46	[84-75-3]	neat		1	10mg
2101.20-100MG	Di-n-hexyl phthalate	334.46	[84-75-3]	neat		1	100mg
2054.22-100-HX	Dibenzyl phthalate	346.39	[523-31-9]	100µg/mL	hexane	1	1mL
2103.22-10MG	Hexyl 2-ethylhexyl phthalate	362.51	[75673-16-4]	neat		1	10mg
2103.22-100MG	Hexyl 2-ethylhexyl phthalate	362.51	[75673-16-4]	neat		1	100mg
2095.20-10MG	Di(2-n-butoxyethyl) phthalate	366.46	[117-83-9]	neat		1	10mg
2095.20-100MG	Di(2-n-butoxyethyl) phthalate	366.46	[117-83-9]	neat		1	100mg
1224.24-10MG	Di(2-ethylhexyl)phthalate	390.57	[117-81-7]	neat		1	10mg
1224.24-100MG	Di(2-ethylhexyl)phthalate	390.57	[117-81-7]	neat		1	100mg
8016.24-10MG	Di(2-ethylhexyl)isophthalate	390.57	[137-89-3]	neat		1	10mg
8016.24-100MG	Di(2-ethylhexyl)isophthalate	390.57	[137-89-3]	neat		1	100mg
1223.24-10MG	Di-n-octyl phthalate	390.57	[117-84-0]	neat		1	10mg
1223.24-100MG	Di-n-octyl phthalate	390.56	[117-84-0]	neat		1	100mg
1229.26-10MG	Di-iso-nonyl phthalate (isomer mixture)	418.62	[28553-12-0]	neat		1	10mg
1229.26-100MG	Di-iso-nonyl phthalate (isomer mixture)	418.62	[28553-12-0]	neat		1	100mg
2110.26-10MG	Di-n-nonyl phthalate	418.62	[84-76-4]	neat		1	10mg
2110.26-100MG	Di-n-nonyl phthalate	418.62	[84-76-4]	neat		1	100mg
3049.28-10MG	Di-iso-decyl phthalate	446.67	[26761-40-0]	neat		1	10mg
3126.27-KIT	Mono+Dialkylphthalate Kit						Kit

All dialkylphthalates are also available as 1000µg/mL in isooctane

## Deuterated adipates

2276.22-K-IO	Di(2-ethylhexyl) adipate-d8	412.83		1000µg/mL	isooctane	1	1mL
--------------	-----------------------------	--------	--	-----------	-----------	---	-----

## Adipates

1228.22-10MG	Di(2-ethylhexyl) adipate	370.58	[103-23-1]	neat		1	10mg
2212.22-K-IO	Di-n-octyl adipate	370.58	[123-79-5]	1000µg/mL	isooctane	1	1mL
2213.22-K-IO	Di-iso-octyl adipate	370.58	[1330-86-5]	1000µg/mL	isooctane	1	1mL
2214.24-K-IO	Di-n-nonyl adipate	398.63	[151-32-6]	1000µg/mL	isooctane	1	1mL
2218.24-K-IO	Di-iso-nonyl adipate	398.63	[33703-08-1]	1000µg/mL	isooctane	1	1mL
3127.5-KIT	Adipate Kit						Kit
1919.32-KIT	Phthalate and adipate Kit (3126.27+3127.5)						Kit



# LAS and ABS (Linear alkylbenzene sulfonates and alkylbenzene sulfonates)

**NEW**

## Pure isomers

2909.14-100-ME	Sodium p-n-octylbenzenesulfonate	292.37	[6149-03-7]	100µg/mL	methanol	1	1mL
2910.16-100-ME	Sodium p-n-decylbenzenesulfonate		[2627-06-7]	100µg/mL	methanol	1	1mL
2911.17-100-ME	Sodium p-n-undecylbenzenesulfonate		[20466-34-6]	100µg/mL	methanol	1	1mL
2560.18-100-ME	Calcium p-n-dodecylbenzenesulfonate	365.57	[26264-06-2]	100µg/mL	methanol	1	1mL
2561.18-100-ME	Sodium p-n-dodecylbenzenesulfonate	348.48	[2211-98-5]	100µg/mL	methanol	1	1mL
2561.18-K-ME	Sodium p-n-dodecylbenzenesulfonate	348.48	[2211-98-5]	1000µg/mL	methanol	1	1mL
2562.19-K-ME	Sodium p-n-tridecylbenzenesulfonate	362.51	[14356-40-2]	1000µg/mL	methanol	1	1mL
2562.19-100-ME	Sodium p-n-tridecylbenzenesulfonate	362.51	[14356-40-2]	100µg/mL	methanol	1	1mL
2912.20-100-ME	Sodium p-n-tetradecylbenzenesulfonate		[1797-33-7]	100µg/mL	methanol	1	1mL
2913.7-KIT	LAS Kit (methanol)						Kit

## Technical mixtures

3722.18-K-ME	Dodecylbenzenesulfonic acid, mixture of C12	LAS 12, soft		[27176-87-0]	1000µg/mL	methanol	1	1mL
3722.18-100MG	Dodecylbenzenesulfonic acid, mixture of C12	LAS 12, soft		[27176-87-0]	neat		1	100mg
3723.18-K-ME	Sodium dodecylbenzenesulfonate, mixture of C10-C14	ABS 10-14 Na, Hard	348.18	[25155-30-0]	1000µg/mL	methanol	1	1mL
3723.18-100MG	Sodium dodecylbenzenesulfonate, mixture of C10-C14	ABS 10-14 Na, Hard	348.18	[25155-30-0]	neat		1	100mg
3724.18-K-ME	Sodium dodecylbenzenesulfonate, mixture of C10-C14	LAS 10-14, Soft		[69669-44-9]	1000µg/mL	methanol	1	1mL
3724.18-100MG	Sodium dodecylbenzenesulfonate, mixture of C10-C14	LAS 10-14, Soft		[69669-44-9]	neat		1	100mg
8106.18-100MG	Sodium dodecylbenzenesulfonate, mixture of C10-C14, 38% water	LAS 10-14, Soft		[69669-44-9]	neat		1	100mg
3725.18-K-ME	Dodecene-1 LAS		348.47	[25155-30-0]	1000µg/mL	methanol	1	1mL