

The Biomarker Catalogue



Page 288-294  
Sulfur compounds



The collection of reference standards  
- 2008 -





# Sulfur compounds

## Thiols

### Alkanethiols

0184.2-1ML	Ethanethiol	62.13	[75-08-1]	neat	1	1mL
0189.3-1ML	1-Propanethiol	76.16	[107-03-9]	neat	1	1mL
0187.3-1ML	2-Propanethiol	76.16	[75-33-2]	neat	1	1mL
0194.4-1ML	1-Butanethiol	90.19	[109-75-5]	neat	1	1mL
0191.4-1ML	2-Butanethiol	90.19	[513-53-1]	neat	1	1mL
0192.4-1ML	2-Methyl-1-propanethiol	90.19	[513-44-0]	neat	1	1mL
0188.4-1ML	2-Methyl-2-propanethiol	90.19	[75-66-1]	neat	1	1mL
0080.5-1ML	1-Pentanethiol	104.22	[110-66-7]	neat	1	1mL
0081.5-1ML	2-Methyl-1-butanethiol	104.22	[1878-18-8]	neat	1	1mL
0083.5-100MG	2-Methyl-2-butanethiol	104.22	[1679-09-0]	neat	1	100mg
0083.5-5ML	2-Methyl-2-butanethiol	104.22	[1679-09-0]	neat	1	5mL
0082.5-1ML	3-Methyl-1-butanethiol	104.22	[541-31-1]	neat	1	1mL
0084.5-100MG	3-Methyl-2-butanethiol	104.22	[2084-18-6]	neat	1	100mg
0084.5-5ML	3-Methyl-2-butanethiol	104.22	[2084-18-6]	neat	1	5mL
0086.6-100MG	1-Hexanethiol	118.24	[111-31-9]	neat	1	100mg
0086.6-5ML	1-Hexanethiol	118.24	[111-31-9]	neat	1	5mL
0088.6-100MG	2,3-Dimethyl-2-butanethiol	118.24	[1639-01-6]	neat	1	100mg
0088.6-5ML	2,3-Dimethyl-2-butanethiol	118.24	[1639-01-6]	neat	1	5mL
0087.6-100MG	2-Methyl-2-pentanethiol	118.24	[1633-97-2]	neat	1	100mg
0087.6-5ML	2-Methyl-2-pentanethiol	118.24	[1633-97-2]	neat	1	5mL
0089.7-1ML	1-Heptanethiol	132.27	[1639-09-4]	neat	1	1mL
0089.7-100MG	1-Heptanethiol	132.27	[1639-09-4]	neat	1	100mg
0090.8-1ML	1-Octanethiol	146.30	[111-88-6]	neat	1	1mL
0091.9-1ML	1-Nonanethiol	160.32	[1455-21-6]	neat	1	1mL
0092.10-1ML	1-Decanethiol (96%)	174.35	[143-10-2]	neat	1	1mL
0092.10-1ML	1-Decanethiol (99%)	174.35	[143-10-2]	neat	1	1mL
1911.19-KIT	Alkanethiol Kit (100mg of 83.5/84.5/86.6/87.6/88.6/89.7)					Kit

### Cycloalkanethiols

0093.5-1ML	Cyclopentanethiol	102.20	[1679-07-8]	neat	1	1mL
0094.6-1ML	Cyclohexanethiol	116.23	[1569-69-3]	neat	1	1mL
1067.2-KIT	Cycloalkylthiol Kit					Kit

### Thiophenols

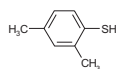
0095.6-1ML	Thiophenol	110.18	[108-98-5]	neat	1	1mL
0096.7-1ML	alpha-Toluenethiol	124.21	[100-53-8]	neat	1	1mL



1052.7-1ML	o-Thiocresol	124.21	[137-06-4]	neat	1	1mL
------------	--------------	--------	------------	------	---	-----

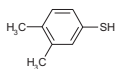


1053.7-1ML	m-Thiocresol	124.21	[108-40-7]	neat	1	1mL
1054.7-100MG	p-Thiocresol	124.21	[106-54-6]	neat	1	100mg
1056.8-100MG	2,4-Dimethylthiophenol	138.23	[13616-82-5]	neat	1	100mg

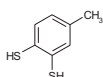




1057.8-100MG	2,5-Dimethylthiophenol	138.23	[4001-61-0]	neat	1	100mg
1055.8-100MG	2,6-Dimethylthiophenol	138.23	[118-72-9]	neat	1	100mg
1058.8-100MG	3,4-Dimethylthiophenol	138.23	[18800-53-8]	neat	1	100mg



1059.8-100MG	3,5-Dimethylthiophenol	138.23	[38360-81-5]	neat	1	100mg
1060.8-100MG	2-Ethylthiophenol	138.23	[4500-58-7]	neat	1	100mg
2174.8-1ML	3-Ethylbenzenethiol	138.23	[62154-77-2]	neat	1	1mL
1061.8-100MG	4-Ethylthiophenol	138.23	[4946-13-8]	neat	1	100mg
1062.9-100MG	4-Isopropylthiophenol	152.26	[4946-14-9]	neat	1	100mg
1347.7-K-AC	3,4-Dimercaptotoluene	156.27	[496-74-2]	1000µg/mL	acteone	1 1mL



1063.15-KIT	Thiophenol Kit					Kit
-------------	----------------	--	--	--	--	-----

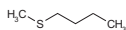
## Sulfides

### Aliphatic sulfides

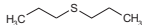
2139.2-1ML	Ethylene sulfide	60.12	[420-12-2]	neat	1	1mL
------------	------------------	-------	------------	------	---	-----



0185.2-1ML	Dimethylsulfide	62.13	[75-18-3]	neat	1	1mL
0190.3-1ML	Ethylmethylsulfide	76.16	[624-89-5]	neat	1	1mL
0193.4-1ML	Diethylsulfide	90.19	[352-93-2]	neat	1	1mL
0098.4-1ML	Methylisopropylsulfide	90.19	[1551-21-9]	neat	1	1mL
0097.4-1ML	Methyl-n-propylsulfide	90.19	[3877-15-4]	neat	1	1mL
1000.5-1ML	Ethyl-n-propylsulfide	104.22	[4110-50-3]	neat	1	1mL
0099.5-100MG	Methyl-n-butylsulfide	104.22	[628-29-5]	neat	1	100mg



0099.5-5ML	Methyl-n-butylsulfide	104.22	[628-29-5]	neat	1	5mL
1001.5-100MG	Methyl-tert-butylsulfide	104.22	[97759-61-0]	neat	1	100mg
1001.5-5ML	Methyl-tert-butylsulfide	104.22	[97759-61-0]	neat	1	5mL
1002.6-1ML	Di-n-propylsulfide	118.24	[111-47-7]	neat	1	1mL



1003.6-1ML	Diisopropylsulfide	118.24	[625-80-9]	neat	1	1mL
0200.8-1ML	Di-n-butylsulfide	146.30	[544-40-1]	neat	1	1mL
1004.8-1ML	Di-tert-butylsulfide	146.30	[107-47-1]	neat	1	1mL
1222.16-1G	Di-n-octylsulfide	258.51	[2690-08-6]	neat	1	1g
1912.14-KIT	Thioalkane Kit					Kit

### Cycloalkylthioalkanes

1005.6-100MG	Cyclopentylmethylsulfide	116.23	[7133-36-0]	neat	1	100mg
--------------	--------------------------	--------	-------------	------	---	-------



1005.6-5ML	Cyclopentylmethylsulfide	116.23	[7133-36-0]	neat	1	5mL
------------	--------------------------	--------	-------------	------	---	-----



## Phenylthioalkanes

1006.7-1ML	Methylphenylsulfide	124.21	[100-68-5]	neat		1	1mL
------------	---------------------	--------	------------	------	--	---	-----



1007.8-1ML	Ethylphenylsulfide	138.23	[622-38-8]	neat		1	1mL
------------	--------------------	--------	------------	------	--	---	-----

## Thiocycloalkanes

1008.3-1ML	Trimethylenesulfide	74.15	[287-27-4]	neat		1	1mL
------------	---------------------	-------	------------	------	--	---	-----



0169.4-1ML	Tetrahydrothiophene	88.17	[110-01-0]	neat		1	1mL
------------	---------------------	-------	------------	------	--	---	-----

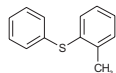


1334.5-100MG	2-Methyltetrahydrothiophene	102.20	[1795-09-1]	neat		1	100mg
1334.5-1ML	2-Methyltetrahydrothiophene	102.20	[1795-09-1]	neat		1	1mL
1009.5-100MG	3-Methyltetrahydrothiophene	102.20	[4740-00-5]	neat		1	100mg
1009.5-5ML	3-Methyltetrahydrothiophene	102.20	[4740-00-5]	neat		1	5mL
1010.5-100MG	Thiocylohexane	102.20	[1613-51-0]	neat		1	100mg
1010.5-5ML	Thiocylohexane	102.20	[1613-51-0]	neat		1	5mL
1913.5-KIT	Thiocycloalkane Kit						Kit
2789.12-100-IO	4,4'-Thiodianiline	216.31	[139-65-1]	100µg/mL	isooctane	1	1mL

## Diphenylsulfides

0907.12-500-IO	Diphenylsulfide	186.28	[139-66-2]	500µg/mL	isooctane	1	1mL
----------------	-----------------	--------	------------	----------	-----------	---	-----

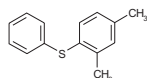
0888.13-500-IO	2-Methyldiphenylsulfide	200.30	[13963-35-4]	500µg/mL	isooctane	1	1mL
----------------	-------------------------	--------	--------------	----------	-----------	---	-----



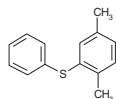
0889.13-500-IO	3-Methyldiphenylsulfide	200.30	[13865-48-0]	500µg/mL	isooctane	1	1mL
----------------	-------------------------	--------	--------------	----------	-----------	---	-----

0891.13-500-IO	4-Methyldiphenylsulfide	200.30	[3699-01-2]	500µg/mL	isooctane	1	1mL
----------------	-------------------------	--------	-------------	----------	-----------	---	-----

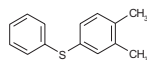
0917.14-500-IO	2,4-Dimethyldiphenylsulfide	214.33	[16704-47-5]	500µg/mL	isooctane	1	1mL
----------------	-----------------------------	--------	--------------	----------	-----------	---	-----



0916.14-500-IO	2,5-Dimethyldiphenylsulfide	214.33	[16704-47-3]	500µg/mL	isooctane	1	1mL
----------------	-----------------------------	--------	--------------	----------	-----------	---	-----



0940.14-500-IO	3,4-Dimethyldiphenylsulfide	214.33	[2828-65-1]	500µg/mL	isooctane	1	1mL
----------------	-----------------------------	--------	-------------	----------	-----------	---	-----



0893.7-KIT	Diphenylsulfide Kit						Kit
------------	---------------------	--	--	--	--	--	-----



## Polysulfur compounds

### Polysulfur Kit I

0195.2 **Dimethyldisulfide**  
[624-92-0] MW 94.20

0195.2-1G neat, 1x1g

1011.4 **1,3-Dithiane**  
[505-23-7] MW 120.24



1011.4-1G neat, 1x1g

1754.4 **1,4-Dithiane**  
[505-29-3] MW 120.24



1754.4-1G neat, 1x1g

0196.4 **Diethyldisulfide**  
[110-81-6] MW 122.25

0196.4-1G neat, 1x1g

1014.4 **Methylpropyldisulfide**  
[2179-60-4] MW 122.25

1014.4-1G neat, 1x1g

1012.6 **Di-n-propyldisulfide**  
[629-19-6] MW 150.31

1012.6-1G neat, 1x1g

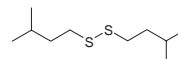
1755.8 **Di-n-butyldisulfide**  
[629-45-8] MW 178.36

1755.8-1G neat, 1x1g

1013.8 **Di-tert-butyldisulfide**  
[110-06-5] MW 178.36

1013.8-1ML neat, 1x1mL

1757.10 **Diisopentyldisulfide**  
Diisoamildisulphide  
[2051-04-9] MW 206.41



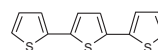
1757.10-1G neat, 1x1g

1757.10-K-IO 1000µg/mL isooctane, 1x1mL

1756.10 **Di-n-pentyldisulfide**  
[112-51-6] MW 206.41

1756.10-1G neat, 1x1g

0491.12 **2,2',5',2''-Terthiophene**  
[1081-34-1] MW 248.39



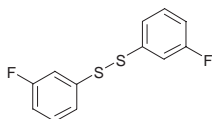
0491.12-K-IO 1000µg/mL, isooctane, 1x1mL



---

2716.12      **m-Difluorodiphenyldisulfide**

Bis(3-fluorophenyl)disulfide  
[63930-17-6] MW 254.32



2716.12-K-IO      1000µg/mL isooctane, 1x1mL

---

1797.14      **Di-n-heptyldisulfide**

[10496-16-9] MW 262.52

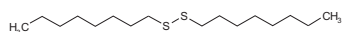
1797.14-K-IO      1000µg/mL isooctane, 1x1mL

1797.14-1G      neat, 1x1g

---

1799.16      **Di-n-octyldisulfide**

[822-27-5] MW 290.58



1799.16-K-IO      1000µg/mL isooctane, 1x1mL

1799.16-100MG      neat, 1x100mg

---

1798.20      **Di-n-decyldisulfide**

[10496-18-1] MW 346.69

1798.20-1G      neat, 1x1g

---

1221.36      **Di-n-octadecyldisulfide**

[2500-88-1] MW 571.12

1221.36-K-IO      1000µg/mL isooctane, 1x1mL

---

0476.16      **Polysulfur Kit I**

0476.16-KIT      Kit

---



## Polysulfur Kit II

0367.5 **2-(Methylthio)thiophene**  
[5780-36-9] MW 130.23



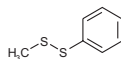
0367.5-100MG neat, 1x100mg

0368.5 **3-(Methylthio)thiophene**  
[20731-74-2] MW 130.23



0368.5-100MG neat, 1x100mg

1016.7 **Methylphenyldisulfide**  
[14173-25-2] MW 156.27



1016.7-1G neat, 1x1g

0490.8 **2,2'-Dithienyl**  
[492-97-7] MW 166.27



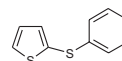
0490.8-K-IO 1000µg/mL isooctane, 1x1mL

0364.8 **3,4-Dimethylthieno[2,4-b]thiophene**  
[17502-58-1] MW 168.28



0364.8-K-IO 1000µg/mL isooctane, 1x1mL

0488.10 **2-(Phenylthio)thiophene**  
[16718-12-0] MW 192.30

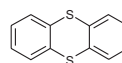


0488.10-K-IO 1000µg/mL isooctane, 1x1mL

0489.10 **3-(Phenylthio)thiophene**  
[16718-11-9] MW 192.30

0489.10-K-IO 1000µg/mL isooctane, 1x1mL

0366.12 **Thianthrene**  
[92-85-3] MW 216.33

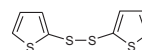


0366.12-K-IO 1000µg/mL isooctane, 1x1mL

1015.12 **Diphenyldisulfide**  
[882-33-7] MW 218.34

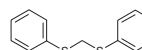
1015.12-K-IO 1000µg/mL isooctane, 1x1mL

0492.8 **Di(2-thienyl)disulfide**  
[6911-51-9] MW 230.39



0492.8-K-IO 1000µg/mL isooctane, 1x1mL

1018.13 **Bis(phenylthio)methane**  
[3561-67-9] MW 232.37



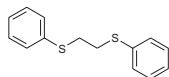
1018.13-K-IO 1000µg/mL isooctane, 1x1mL



1796.12 **Di-n-hexyldisulfide**  
[10496-15-8] MW 234.47

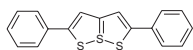
1796.12-1G neat, 1x1g

1017.14 **1,2-Bis(phenylthio)ethane**  
[622-20-8] MW 246.40



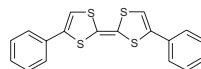
1017.14-K-IO 1000µg/mL isooctane, 1x1mL

0365.17 **2,5-Diphenyl-1,6,6a-trithiapentalene**  
[103-90-5] MW 312.48



0365.17-K-T 1000µg/mL toluene, 1x1mL

0369.18 **4,4'-Diphenyltetrathiafulvalene**  
[5152-94-2] MW 356.55



0369.18-K-T 1000µg/mL toluene, 1x1mL

1064.15 **Polysulfur Kit II**

1064.15-KIT Kit