

The Biomarker Catalogue



Page 384-387
Metallo-organics



The collection of reference standards
- 2008 -



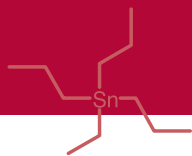


Metallo-organics

Tin-organics

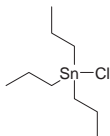
Tin chlorides (common pollutants)

1983.4-K-5IO	Mono-n-butyltin trichloride	282.17	[1118-46-3]	1000µg/mL	isooctane	1	5mL
1983.4-1G	Mono-n-butyltin trichloride	282.17	[1118-46-3]	neat		1	1g
1982.8-K-5IO	Di-n-butyltin dichloride	303.83	[683-18-1]	1000µg/mL	isooctane	1	5mL
1982.8-1G	Di-n-butyltin dichloride	303.83	[683-18-1]	neat		1	1g
1981.12-K-5IO	Tri-n-butyltin chloride	325.49	[1461-22-9]	1000µg/mL	isooctane	1	5mL
1981.12-1G	Tri-n-butyltin chloride	325.49	[1461-22-9]	neat		1	1g
2487.8-K-ME	Mono-n-octyltin trichloride	338.27	[3091-25-6]	1000µg/mL	methanol	1	1mL
2487.8-1G	Mono-n-octyltin trichloride	338.27	[3091-25-6]	neat		1	1g
2488.16-K-ME	Di-n-octyltin dichloride	416.05	[3542-36-7]	1000µg/mL	methanol	1	1mL
2488.16-1G	Di-n-octyltin dichloride	416.05	[3542-36-7]	neat		1	1g
2695.24-K-5IO	Tri-n-octyltin chloride	493.82	[2587-76-0]	1000µg/mL	isooctane	1	5mL
2695.24-100MG	Tri-n-octyltin chloride	493.82	[2587-76-0]	neat		1	100mg
1987.6-K-5IO	Monophenyltin trichloride	302.16	[1124-19-2]	1000µg/mL	isooctane	1	5mL
1987.6-1G	Monophenyltin trichloride	302.16	[1124-19-2]	neat		1	1g
1986.12-K-5IO	Diphenyltin dichloride	343.81	[1135-99-5]	1000µg/mL	isooctane	1	5mL
1986.12-1G	Diphenyltin dichloride	343.81	[1135-99-5]	neat		1	1g
1985.18-K-5IO	Triphenyltin chloride	385.46	[639-58-7]	1000µg/mL	isooctane	1	5mL
1985.18-1G	Triphenyltin chloride	385.46	[639-58-7]	neat		1	1g
2489.18-K-ME	Tricyclohexyltin chloride	403.61	[3091-32-5]	1000µg/mL	methanol	1	1mL
2489.18-1G	Tricyclohexyltin chloride	403.61	[3091-32-5]			1	1g
1984.3-KIT	Butyltin chlorides Kit (solutions, 1983.4, 1982.8, 1981.12)						Kit
1984.3-KIT	Butyltin chlorides Kit (neat, 1983.4, 1982.8, 1981.12)						Kit
1988.3-KIT	Phenyltin chlorides Kit (solutions, 1987.6, 1986.12, 1985.18)						Kit
1988.3-KIT	Phenyltin chlorides Kit (neat, 1987.6, 1986.12, 1985.18)						Kit
3726.10-KIT	Tin Chlorides Kit (neat)						Kit



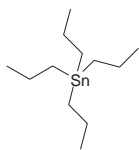
Internal standards (tin chlorides)

1989.9 **Tri-n-propyltin chloride**
[2279-76-7] MW 283.41



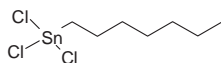
1989.9-K-ME 1000µg/mL methanol, 1x1mL
1989.9-1G neat, 1x1g

2490.12 **Tetra-n-propyltin**
[2176-98-9] MW 291.05



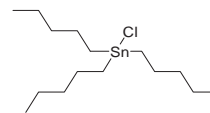
2490.12-K-IO 1000µg/mL iso-octane, 1x1mL
2490.12-1G neat, 1x1g

2495.7 **Mono-n-heptyltin trichloride**
[59344-47-7] MW 324.25



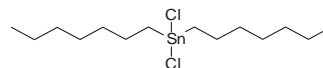
2495.7-K-ME 1000µg/mL methanol, 1x1mL
2495.7-100MG neat, 1x100mg

2050.15 **Tri-n-pentyltin chloride**
[3342-67-4] MW 367.57



2050.15-K-ME 1000µg/mL methanol, 1x1mL
2050.15-1G neat, 1x1g

2496.14 **Di-n-heptyltin dichloride**
[74340-12-8] MW 387.99



2496.14-K-ME 1000µg/mL methanol, 1x1mL
2496.14-100MG neat, 1x100mg

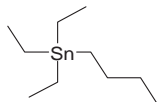
2496.14 **Tetra-n-pentyltin**
[3765-65-9] MW 403.27

2496.14-K-ME 1000µg/mL methanol, 1x1mL
2496.14-1G neat, 1x1g



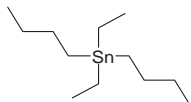
Analytes ethyl derivatives

2119.10 **Mono-n-butyltriethyltin**
[17582-53-5] MW 262.99



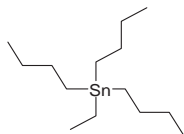
2119.10-K-IO 1000µg/mL isooctane, 1x1mL

2120.12 **Di-n-butyl-diethyltin**
[20525-62-6] MW 291.05



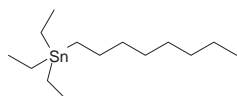
2120.12-K-IO 1000µg/mL isooctane, 1x1mL

1886.14 **Ethyltri-n-butyltin**
[19411-60-0] MW 319.10



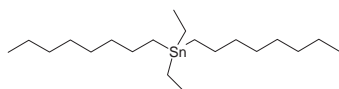
1886.14-K-IO 1000µg/mL isooctane, 1x1mL

2492.14 **Mono-n-octyltriethyltin**
[16216-27-6] MW 319.10



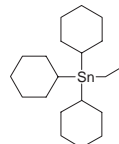
2492.14-K-IO 1000µg/mL isooctane, 1x1mL

2491.20 **Di-n-octyl-diethyltin**
[14775-13-4] MW 403.26



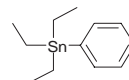
2491.20-K-IO 1000µg/mL isooctane, 1x1mL

2498.20 **Ethyltricyclohexyltin**
[106376-80-1] MW 397.22



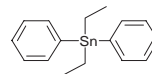
2498.20-K-IO 1000µg/mL isooctane, 1x1mL

2118.12 **Monophenyltriethyltin**
[878-51-3] MW 282.98



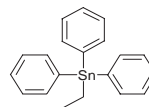
2118.12-K-IO 1000µg/mL isooctane, 1x1mL

2117.16 **Diphenyl-diethyltin**
[10203-52-8] MW 331.03



2117.16-K-IO 1000µg/mL isooctane, 1x1mL

1887.20 **Ethyltriphenyltin**
[5424-25-9] MW 379.07

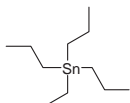


1887.20-K-IO 1000µg/mL isooctane, 1x1mL



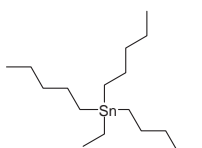
Internal standards ethyl derivatives

1955.11 **Ethyltri-n-propyltin**
[3440-79-7] MW 277.02



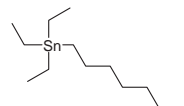
1955.11-K-IO 1000µg/mL Isooctane, 1x1mL

2049.17 **Ethyltripentyltin**
[198958-44-0] MW 361.18



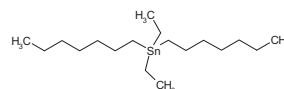
2049.17-K-IO 1000µg/mL isooctane, 1x1mL

2494.13 **Mono-n-heptyltriethyltin**
[51283-39-7] MW 305.07



2494.13-K-IO 1000µg/mL isooctane, 1x1mL

2493.18 **Di-n-heptyldiethyltin**
[165900-80-1] MW 375.21



2493.18-K-IO 1000µg/mL isooctane, 1X1mL

2023.13 **Ethylalkyl-/ Ethylaryl tin Kit**

2023.13-KIT Kit

Derivatizing agents and other

1944.8-1G	Sodium tetraethylborate	150.05	[15523-24-7]	neat		1	1g
2497.16-K-IO	Tetra-n-butyltin	347.16	[1461-25-2]	1000µg/mL	isooctane	1	1mL
2024.20-KIT-S	Organotin Analysis Kit (one of each of the above, solution when available)						Kit
2024.20-KIT-N	Organotin Analysis Kit (one of each of the above, neat when available)						Kit

Organoleads

2201.8-K-IO	Tetraethyllead (contains trace of xylenes)	323.44	[78-00-2]	1000µg/mL	isooctane	1	1mL
2201.8-K-10IO	Tetraethyllead (contains trace of xylenes)	323.44	[78-00-2]	1000µg/mL	isooctane	1	10mL

Oil-based metal standards

Please inquire