

The Biomarker Catalogue

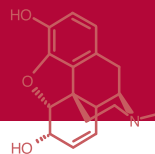


Page 388-411
Forensics and pharmaceuticals



The collection of reference standards
- 2008 -





Forensics and pharmaceuticals

Forensics and drug/pharma metabolites

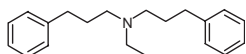
NEW

Alverine

3756.20

Alverine

[150-59-4] MW 281.44



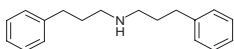
3756.20-K-IO
3756.20-10MG

1000µg/mL isooctane, 1x1mL
neat, 1x10mg

2877.18

Di-(3-phenyl-1-propyl)amine

[93948-20-0] MW 253.39



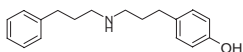
2877.18-K-IO

1000µg/mL isooctane, 1x1mL

2876.19

N-(3-Phenylpropyl)-3-(4-hydroxyphenyl)propylamine

MW 267.42



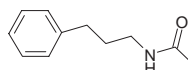
2876.19-K-IO

1000µg/mL isooctane, 1x1mL

2905.11

N-(3-Phenylpropyl)acetamide

[34059-10-4] MW 177.25



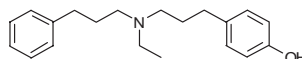
2905.11-K-IO

1000µg/mL isooctane, 1x1mL

2875.20

N-Ethyl,N-(3-phenylpropyl)-3-(4-hydroxyphenyl)propylamine

[142047-94-7] MW 297.44

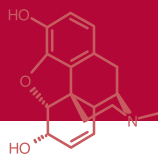


2875.20-K-IO

1000µg/mL isooctane, 1x1mL

Buprenorphine

3757.29-K-IO	Buprenorphine	467.65	[52485-79-7]	1000µg/mL	isooctane	1	1mL
3758.25-K-IO	Norbuprenorphine	413.55	[78715-23-8]	1000µg/mL	isooctane	1	1mL

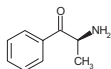


Cathinone

1456.9

Cathinone

[5265-18-9] MW 149.19



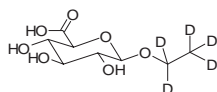
Please inquire

Ethanol

1627.8

d5-Ethyl-β-D-6-glucuronide

MW 227.23



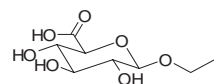
1627.8-10MG

neat, 1x10mg

1626.8

Ethyl-β-D-6-glucuronide

[17685-04-0] MW 222.20



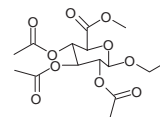
1626.8-10MG

neat, 1x10mg

2362.15

Ethyl-β-D-triacetyl glucuronic acid methyl ester

MW 362.34



2362.15-10MG

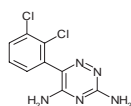
neat, 1x10mg

Lamotrigine

3922.9

Lamotrigine

[84057-84-1] MW 256.09

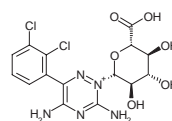


Please inquire

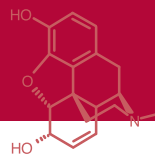
3923.15

Lamotrigine-2N-glucuronide

[135288-68-5]

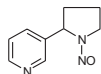


Please inquire



Nicotines

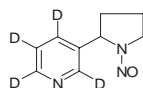
1702.9 **N-Nitrosornicotine**
[16543-55-8] MW 177.21



1702.9-K-AN 1000µg/mL acetonitrile, 1x1mL

1702.9-K-2AN 1000µg/mL acetonitrile, 1x2mL

1706.9 **DL-N-Nitrosornicotine-d4**
MW 181.23



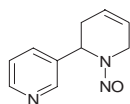
1706.9-K-AN 1000µg/mL acetonitrile, 1x1mL

1706.9-K-2AN 1000µg/mL acetonitrile, 1x2mL

1706.9-K-4AN 1000µg/mL acetonitrile, 1x4mL

1706.9-10MG neat, 1x10mg

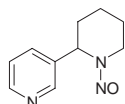
1705.10 **(RS)-N-Nitrosoanatabine**
[71267-22-6] MW 189.22



1705.10-K-AN 1000µg/mL acetonitrile, 1x1mL

1705.10-K-2AN 1000µg/mL acetonitrile, 1x2mL

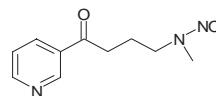
1704.10 **(RS)-N-Nitrosoanabasine**
[37620-20-5] MW 191.23



1704.10-K-AN 1000µg/mL acetonitrile, 1x1mL

1704.10-K-2AN 1000µg/mL acetonitrile, 1x2mL

1703.10 **4-(N-Methyl-N-nitrosoamino)-1-(3-pyridyl)-1-butanone**
[64091-91-4] MW 207.23



1703.10-K-AN 1000µg/mL acetonitrile, 1x1mL

1703.10-K-2AN 1000µg/mL acetonitrile, 1x2mL

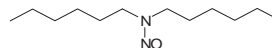
1707.10 **4-(N-Methyl-N-nitrosamino)-1-(3-pyridyl)-1-butanone-d4**
MW 211.26

1707.10-K-AN 1000µg/mL acetonitrile, 1x1mL

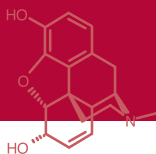
1707.10-K-4AN 1000µg/mL acetonitrile, 1x4mL

1707.10-10MG neat, 1x10mg

2743.12 **N-Nitroso-di-n-hexylamine**
[6949-28-6] MW 214.35



2743.12-K-IP 1000µg/mL isopropanol, 1x1mL



Morphine

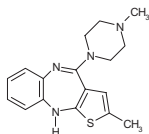
1628.23-10MG Morphine-6-glucuronide 447.45 20290-10-2 neat neat 1 10mg

Olanzapine

3761.17

Olanzapine

[132539-06-1] MW 312.43



3761.17-100MG

neat, 1x100mg

3761.17-250MG

neat, 1x250mg

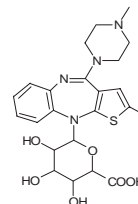
3761.17-1G

neat, 1x1g

3924.23

Olanzapine 10-N-glucuronide

MW 490.58



Please inquire

Pethidine

3763.15

Pethidine

[57-42-1] MW 247.33

Please inquire

3764.14

Norpethidine

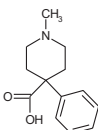
[77-17-8]

Please inquire

2323.13

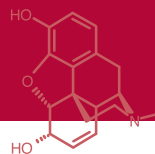
Pethidinic acid

[3627-48-3] MW 219.29



2323.13-10MG

neat, 1x10mg

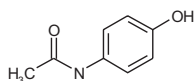


Pharmaceuticals and its impurities

NEW

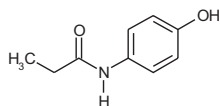
Acetaminophene

2524.8 **Acetaminophene (Paracetamol)**
4-Acetaminophenol
[103-90-2] MW 151.17



2524.8-K-ME 1000µg/mL methanol, 1x1mL
2524.8-500MG neat, 1x500mg

2549.9 **N-(4-Hydroxyphenyl)-propionamide**
Imp. B (EP)
[1693-37-4] MW 165.19

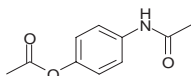


2549.9-100-ME 100µg/mL methanol, 1x1mL
2549.9-100MG neat, 1x100mg

2087.6 **4-Nitrophenol**
Imp. F (EP)
[100-02-7] MW 139.11

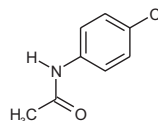
2087.6-K-ME 1000µg/mL methanol, 1x1mL
2087.6-100MG neat, 1x100mg

2550.10 **N,O-Diacetyl-4-aminophenol**
Imp. H (EP)
[2633-33-8] MW 193.20



2550.10-100-ME 100µg/mL methanol, 1x1mL
2550.10-100MG neat, 1x100mg

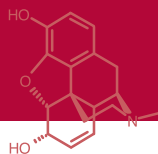
2512.8 **4'-Chloroacetanilide**
Imp. J (EP)
[539-03-7] MW 169.61



2512.8-K-ME 1000µg/mL methanol, 1x1mL
2512.8-100MG neat, 1x100mg

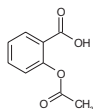
2519.6 **4-Aminophenol**
Imp. K (EP)
[123-30-8] MW 109.13

2519.6-K-ME 1000µg/mL methanol, 1x1mL
2519.6-500MG neat, 1x500mg



Acetylsalicylic acid

2513.9 **Acetylsalicylic acid (Aspirin)**
[50-78-2] MW 180.16

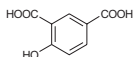


2513.9-K-ME 1000µg/mL methanol, 1x1mL
2513.9-500MG neat, 1x500mg

2514.7 **4-Hydroxybenzoic acid**
Imp. A (EP)
[99-96-7] MW 138.12

2514.7-K-ME 1000µg/mL methanol, 1x1mL
2514.7-100MG neat, 1x100mg

2539.8 **4-Hydroxyisophthalic acid
(4-Hydroxybenzene-
1,3-dicarboxylic acid)**
Imp. B (EP)
[636-46-4] MW 182.13



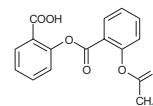
2539.8-K-ME 1000µg/mL methanol, 1x1mL
2539.8-100MG neat, 1x100mg

2515.7 **Salicylic acid
(2-Hydroxybenzoic acid)**
Imp. C (EP)
[69-72-7] MW 138.12



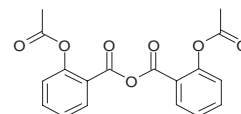
2515.7-K-ME 1000µg/mL methanol, 1x1mL
2515.7-500MG neat, 1x500mg

2516.16 **Acetylsalicylsalicylic acid**
Imp. D (EP)
[530-75-6] MW 300.27



2516.16-100-ME 100µg/mL methanol, 1x1mL
2516.16-10MG neat, 1x10mg
2516.16-25MG neat, 1x25mg
2516.16-100MG neat, 1x100mg

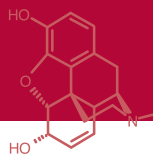
2551.18 **O-Acetylsalicylic anhydride**
Imp. F (EP)
[1466-82-6] MW 342.31



2551.18-100-ME 100µg/mL methanol, 1x1mL
2551.18-100MG neat, 1x100mg

2710.14 **2-(2,4-Dihydroxybenzoyl)
benzoic acid**
[2513-33-9] MW 258.23

2710.14-100-ME 100µg/mL methanol, 1x1mL

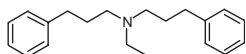


Alverine

3756.20

Alverine

[150-59-4] MW 281.44



3756.20-K-IO

1000µg/mL isooctane, 1x1mL

3756.20-10MG

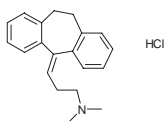
neat, 1x10mg

Amitriptyline

2543.20

Amitriptyline hydrochloride

[549-18-8] MW 313.87



2543.20-K-ME

1000µg/mL methanol, 1x1mL

2543.20-100MG

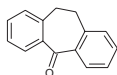
neat, 1x100mg

2544.15

Dibenzosuberone

Imp. A (EP)

[1210-35-1] MW 208.26



2544.15-100-ME

100µg/mL methanol, 1x1mL

2544.15-100MG

neat, 1x100mg

2697.20

Cyclobenzaprine hydrochloride

Imp. B (EP)

[6202-23-9] MW 311.86

2697.20-100-ME

100µg/mL methanol, 1x1mL

2697.20-100MG

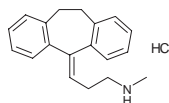
neat, 1x100mg

2698.19

Nortriptyline hydrochloride

Imp. C (EP)

[894-71-3] MW 299.85



2698.19-100-ME

100µg/mL methanol, 1x1mL

2698.19-100MG

neat, 1x100mg

2711.20

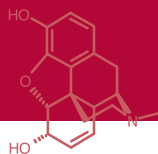
5-(3-Dimethylaminopropyl)-10,11-dihydro-5H-dibenzo[a,d]cyclohepten-5-ol

Imp. D (EP)

[1159-03-1] MW 295.43

2711.20-100-ME

100µg/mL methanol, 1x1mL

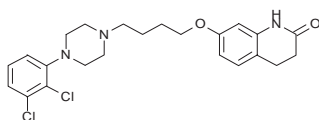


Aripiprazole

2305.23

Aripiprazole

[129722-12-9] MW 448.40



2305.23-100-AN

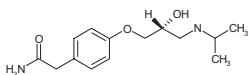
100µg/mL acetonitrile, 1x1mL

Atenolol

2545.14

Atenolol

[29122-68-7] MW 266.34



2545.14-K-ME

1000µg/mL methanol, 1x1mL

2545.14-500MG

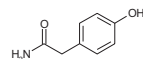
neat, 1x500mg

2521.8

2-(4-Hydroxyphenyl)acetamide

Imp. A (EP)

[17194-82-0] MW 151.17



2521.8-K-ME

1000µg/mL methanol, 1x1mL

2521.8-100MG

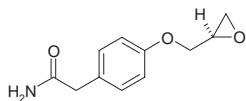
neat, 1x100mg

2725.11

2-[4-[[[(2RS)-2-Oxiran-2-yl]methoxy]phenyl]acetamide

Imp. C (EP)

[29122-69-8] MW 207.23



2725.11-100-IO

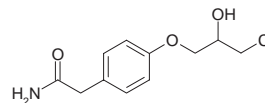
100µg/mL isoctane, 1x1mL

2712.11

2-[4-[(2RS)-3-chloro-2-hydroxypropoxy]phenyl]acetamide

Imp. D (EP)

[115538-83-5] MW 243.69



2712.11-100-ME

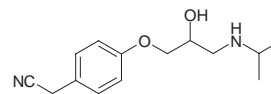
100µg/mL methanol, 1x1mL

2699.14

2-[4-[(2RS)-2-Hydroxy-3-[(1-methylethyl)amino]propoxy]phenyl]acetamide

Imp. H (EP)

[29277-73-4] MW 248.33



2699.14-100-ME

100µg/mL methanol, 1x1mL

2699.14-100MG

neat, 1x100mg

2522.8

4-Hydroxyphenylacetic acid

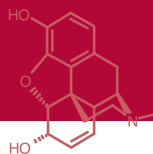
[156-38-7] MW 152.15

2522.8-K-ME

1000µg/mL methanol, 1x1mL

2522.8-100MG

neat, 1x100mg

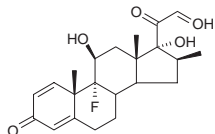


Betamethasone

2800.22

Betamethasone

[378-44-9] MW 388.48



2800.22-5MG

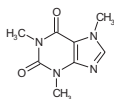
neat, 1x5mg

Caffeine

2517.8

Caffeine

[58-08-2] MW 194.19



2517.8-K-ME

1000µg/mL methanol, 1x1mL

2517.8-500MG

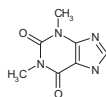
neat, 1x500mg

2518.7

Theophylline

Imp. A (EP)

[58-55-9] MW 180.17



2518.7-100-ME

100µg/mL methanol, 1x1mL

2518.7-500MG

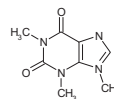
neat, 1x500mg

2700.8

Isocaffeine (1,3,9-Trimethylxanthine)

Imp. C (EP)

[519-32-4] MW 196.21



2700.8-K-ME

1000µg/mL methanol, 1x1mL

2700.8-10MG

neat, 1x10mg

2700.8-25MG

neat, 1x25mg

2540.7

Paraxanthine

[611-59-6] MW 188.23



2540.7-K-ME

1000µg/mL methanol, 1x1mL

2540.7-10MG

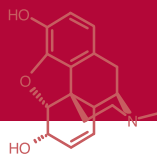
neat, 1x10mg

2540.7-25MG

neat, 1x25mg

2540.7-50MG

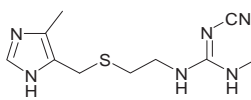
neat, 1x50mg



Carbetocin

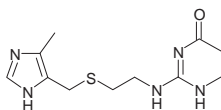
2324.45	Carbetocin [37025-55-1] MW 988.18
2324.45-5MG	neat, 1x5mg

Cimetidine

1634.10	Cimetidine (free base) [51481-61-9] MW 252.34
	
1634.10-K-ME	1000µg/mL methanol, 1x1mL
1634.10-10MG	neat, 1x10mg
1634.10-100MG	neat, 1x100mg
1634.10-250MG	neat, 1x250mg

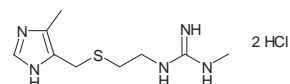
2701.11	Cimetidine hydrochloride [70059-30-2] MW 291.85
2701.11-K-ME	1000µg/mL methanol, 1x1mL
2701.11-10MG	neat, 1x10mg
2701.11-100MG	neat, 1x100mg
2701.11-250MG	neat, 1x250mg
2701.11-500MG	neat, 1x500mg

1633.11	Cimetidine carboxamide dihydrochloride (free base) Imp. C (EP) [110592-19-3] MW 342.29
---------	---



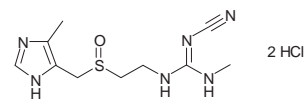
1633.11-100-ME	100µg/mL methanol, 1x1mL
1633.11-25MG	neat, 1x25mg
1633.11-100MG	neat, 1x100mg

1632.9	Cimetidine guanidine derivative (N-Methyl-N'-[2-[[[5-methyl-H-imidazol-4-yl)-methyl]-thio]-ethyl]-guanidine dihydrochloride) Imp. D (EP) [59660-24-1] MW 300.26
--------	--



1632.9-100-ME	100µg/mL methanol, 1x1mL
1632.9-25MG	neat, 1x25mg
1632.9-100MG	neat, 1x100mg

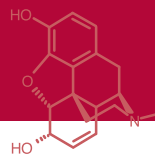
1631.10	Cimetidine sulphoxide dihydrochloride Imp. E (EP) [54237-72-8] MW 341.26
---------	---



1631.10-100-ME	100µg/mL methanol, 1x1mL
1631.10-25MG	neat, 1x25mg
1631.10-100MG	neat, 1x100mg

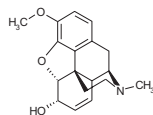
2523.2	Cyanoguanidine [461-58-5] MW 84.08
--------	--

2523.2-K-ME	1000µg/mL methanol, 1x1mL
2523.2-100MG	neat, 1x100mg



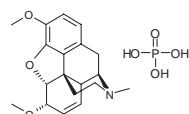
Codeine

1562.18 **Codeine (free base)**
[76-57-3] MW 299.37



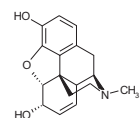
1562.18-K-ME 1000µg/mL methanol, 1x1mL
1562.18-10MG neat, 1x10mg
1562.18-100MG neat, 1x100mg
1562.18-250MG neat, 1x250mg

1898.19 **6-O-Methylcodeine phosphate**
MW 411.40



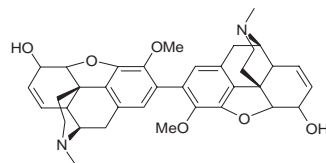
1898.19-100-ME 100µg/mL methanol, 1x1mL
1898.19-10MG neat, 1x10mg
1898.19-25MG neat, 1x25mg
1898.19-100MG neat, 1x100mg
1898.19-250MG neat, 1x250mg

1574.17 **Morphine (free base)**
Imp. B (EP)
[57-27-2] MW 285.35



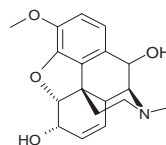
1574.17-K-ME 1000µg/mL methanol, 1x1mL
1574.17-10MG neat, 1x10mg
1574.17-25MG neat, 1x25mg
1574.17-100MG neat, 1x100mg
1574.17-250MG neat, 1x250mg
1574.17-2G neat, 1x2g

1572.36 **Dimethyl pseudomorphine**
Imp. C (EP)
[121395-47-9] MW 596.73

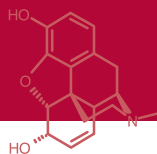


1572.36-100-ME 100µg/mL methanol, 1x1mL
1572.36-10MG neat, 1x10mg
1572.36-100MG neat, 1x100mg
1572.36-250MG neat, 1x250mg

1566.18 **10-Hydroxycodeine
(7,8-Didehydro-4,5a-epoxy-3-
methoxy-17-methylmorphinan-
6a,10-diol)**
Imp. E (EP)
[1777-89-5] MW 315.37

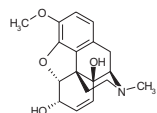


1566.18-100-ME 100µg/mL methanol, 1x1mL
1566.18-10MG neat, 1x10mg
1566.18-25MG neat, 1x25mg
1566.18-100MG neat, 1x100mg
1566.18-250MG neat, 1x250mg



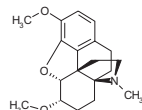
1573.18 **14-Hydroxycodeine
(7,8-Didehydro-4,
5a-epoxy-3-methoxy-17-
methylmorphinan-6a,14-diol)**

Imp. F (EP)
[4829-46-3] MW 315.37



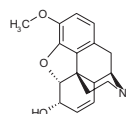
1573.18-100-ME 100µg/mL methanol, 1x1mL
1573.18-10MG neat, 1x10mg
1573.18-100MG neat, 1x100mg
1573.18-250MG neat, 1x250mg

2702.19 **Thebaine**
Imp. G (EP)
[115-37-7] MW 315.42



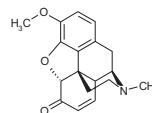
2702.19-100-ME 100µg/mL methanol, 1x1mL
2702.19-25MG neat, 1x25mg
2702.19-50MG neat, 1x50mg

1569.17 **Norcodeine**
[467-15-2] MW 285.35



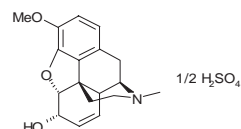
1569.17-K-ME 1000µg/mL methanol, 1x1mL
1569.17-10MG neat, 1x10mg
1569.17-100MG neat, 1x100mg
1569.17-250MG neat, 1x250mg

1571.18 **Codeinone**
[467-13-0] MW 297.36



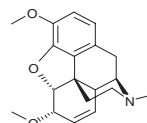
1571.18-100-ME 100µg/mL methanol, 1x1mL
1571.18-10MG neat, 1x10mg
1571.18-25MG neat, 1x25mg
1571.18-100MG neat, 1x100mg
1571.18-250MG neat, 1x250mg

1565.36 **Dicodeine sulfate**
[1420-53-7] MW 299.37

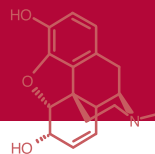


1565.36-K-ME 1000µg/mL methanol, 1x1mL
1565.36-10MG neat, 1x10mg
1565.36-100MG neat, 1x100mg
1565.36-250MG neat, 1x250mg

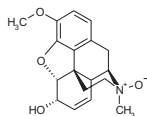
1568.19 **6-O-Methylcodeine**
[2859-16-7] MW 313.40



1568.19-10MG neat, 1x10mg
1568.19-100MG neat, 1x100mg
1568.19-250MG neat, 1x250mg

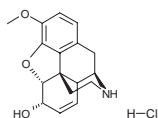


1567.18 **Codeine-N-oxide (free base)**
[3688-65-1] MW 315.37



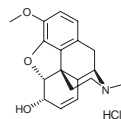
1567.18-100-ME	100µg/mL methanol, 1x1mL
1567.18-10MG	neat, 1x10mg
1567.18-25MG	neat, 1x25mg
1567.18-100MG	neat, 1x100mg
1567.18-250MG	neat, 1x250mg

1899.17 **Norcodeine hydrochloride**
[14648-14-7] MW 321.81



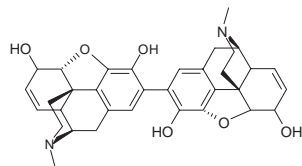
1899.17-K-ME	1000µg/mL methanol, 1x1mL
1899.17-10MG	neat, 1x10mg
1899.17-25MG	neat, 1x25mg
1899.17-100MG	neat, 1x100mg

2546.20 **6-O-Acetylcodeine**
[6703-27-1] MW 341.41

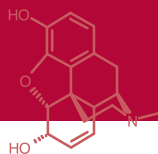


2546.20-100-ME	100µg/mL methanol, 1x1mL
2546.20-10MG	neat, 1x10mg
2546.20-25MG	neat, 1x25mg

1570.34 **Pseudomorphine (free base)**
[125-24-6] MW 568.68

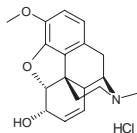


1570.34-100-ME	100µg/mL methanol, 1x1mL
1570.34-10MG	neat, 1x10mg
1570.34-25MG	neat, 1x25mg
1570.34-100MG	neat, 1x100mg
1570.34-250MG	neat, 1x250mg



Codeine hydrochloride dihydrate

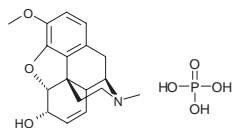
1564.18 **Codeine hydrochloride**
[1422-07-7] MW 335.83



1564.18-K-ME 1000µg/mL methanol, 1x1mL
1564.18-10MG neat, 1x10mg
1564.18-100MG neat, 1x100mg
1564.18-250MG neat, 1x250mg

Codeine phosphate hemihydrate

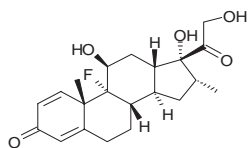
1563.18 **Codeine phosphate hemihydrate**
MW 397.37



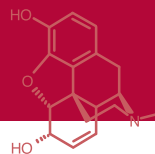
1563.18-K-ME 1000µg/mL methanol, 1x1mL
1563.18-10MG neat, 1x10mg
1563.18-100MG neat, 1x100mg
1563.18-250MG neat, 1x250mg

Dexamethasone

2798.22 **Dexamethasone**
[50-02-2] MW 378.44



2798.22-100MG neat, 1x100mg

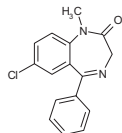


Diazepam

2541.16

Diazepam

[439-14-5] MW 284.75



2541.16-K-ME

1000µg/mL methanol, 1x1mL

2541.16-25MG

neat, 1x25mg

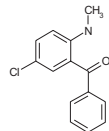
2541.16-100MG

neat, 1x100mg

2542.14

5-Chloro-2-(methylamino)benzophenone

[1022-13-5] MW 245.71



2542.14-K-ME

1000µg/mL methanol, 1x1mL

2542.14-100MG

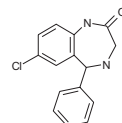
neat, 1x100mg

2703.15

Nordiazepam

Desmethyldiazepam

[1088-11-5] MW 272.74



2703.15-100-ME

100µg/mL methanol, 1x1mL

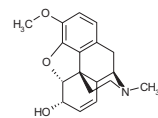
Dihydrocodeine hydrogen tartrate

1562.18

Codeine (free base)

Imp. A (EP)

[76-57-3] MW 299.37



1562.18-K-ME

1000µg/mL methanol, 1x1mL

1562.18-10MG

neat, 1x10mg

1562.18-100MG

neat, 1x100mg

1562.18-250MG

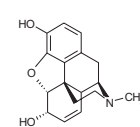
neat, 1x250mg

1574.17

Morphine (free base)

Imp. B (EP)

[57-27-2] MW 285.35



1574.17-K-ME

1000µg/mL methanol, 1x1mL

1574.17-10MG

neat, 1x10mg

1574.17-25MG

neat, 1x25mg

1574.17-100MG

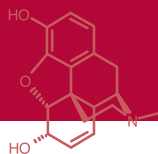
neat, 1x100mg

1574.17-250MG

neat, 1x250mg

1574.17-2G

neat, 1x2g

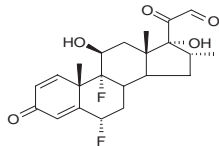


Flumethasone

2799.22

Flumethasone

[2135-17-3] MW 406.47



2799.22-5MG

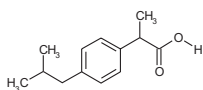
neat, 1x5mg

Ibuprofen

2525.13

Ibuprofen

[15687-27-1] MW 206.29



2525.13-K-ME

1000µg/mL methanol, 1x1mL

2525.13-100MG

neat, 1x100mg

2525.13-500MG

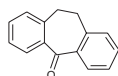
neat, 1x500mg

2544.15

Dibenzosuberone

Imp. A (EP)

[1210-35-1] MW 208.26



2544.15-100MG

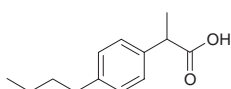
neat, 1x100mg

2532.13

(2RS)-2-(4-Butylphenyl)propanoic acid

Imp. B (EP)

[3585-49-7] MW 206.29



2532.13-100-ME

100µg/mL methanol, 1x1mL

2532.13-100MG

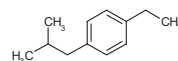
neat, 1x100mg

2704.12

1-Ethyl-4-(2-methylpropyl)benzene

Imp. B2 (EP)

[100319-40-2] MW 162.28



2704.12-100-ME

100µg/mL methanol, 1x1mL

2704.12-100MG

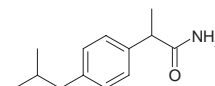
neat, 1x100mg

2718.13

(2RS)-2-[4-(2-Methylpropyl)phenyl]propanamide

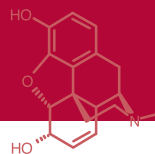
Imp. C (EP)

[59512-17-3] MW 205.30

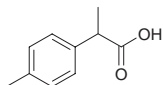


2718.13-100-ME

100µg/mL methanol, 1x1mL

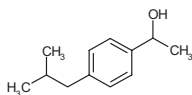


2535.10 **(2RS)-2-(4-Methylphenyl) propanoic acid**
Imp. D (EP)
[938-94-3] MW 164.21



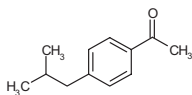
2535.10-K-ME 1000µg/mL methanol, 1x1mL
2535.10-100MG neat, 1x100mg

2537.12 **(1-Hydroxyethyl)-4-(2-methylpropyl)benzene**
Imp. D2 (EP)
[40150-92-3] MW 178.28



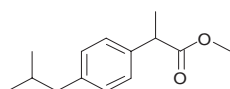
2537.12-100-ME 100µg/mL methanol, 1x1mL
2537.12-100MG neat, 1x100mg

2547.12 **1-[4-(2-Methylpropyl) phenyl]ethanone**
Imp. E (EP)
[38861-78-8] MW 176.26



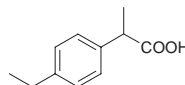
2547.12-100-ME 100µg/mL methanol, 1x1mL
2547.12-25MG neat, 1x25mg
2547.12-100MG neat, 1x100mg

2708.14 **Methyl-2-[4-(2-methylpropyl) phenyl]propanoate**
Imp. F2 (EP)
[61566-34-5] MW 220.31



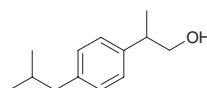
2708.14-100-ME 100µg/mL methanol, 1x1mL
2708.14-100MG neat, 1x100mg

2533.11 **(2RS)-2-(4-Ethylphenyl) propanoic acid**
Imp. N (EP)
[3585-52-2] MW 178.23



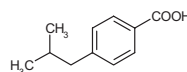
2533.11-100-ME 100µg/mL methanol, 1x1mL
2533.11-25MG neat, 1x25mg
2533.11-100MG neat, 1x100mg

2536.13 **(2RS)-2-[4-(2-Methylpropyl) phenyl]propan-1-ol**
Imp. P (EP)
[36039-36-8] MW 192.30



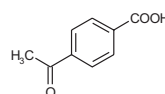
2536.13-100-ME 100µg/mL methanol, 1x1mL
2536.13-25MG neat, 1x25mg
2536.13-100MG neat, 1x100mg

2527.11 **4-Isobutylbenzoic acid**
Imp. S (EP)
[38861-88-0] MW 178.23

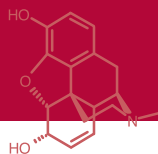


2527.11-100-ME 100µg/mL methanol, 1x1mL
2527.11-100MG neat, 1x100mg

2526.9 **4-Acetylbenzoic acid**
Imp. U (EP)
[586-89-0] MW 164.16



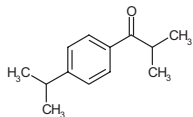
2526.9-100MG neat, 1x100mg



2713.13 **2-Methyl-1-[4-(1-methylethyl)phenyl]-1-propanone**

Imp. W (EP)

[72846-62-9] MW 190.29



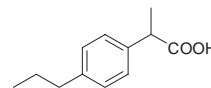
2713.13-100-ME 100µg/mL methanol, 1x1mL

2713.13-25MG neat, 1x25mg

2713.13-100MG neat, 1x100mg

2534.12 **(2RS)-2-(4-n-Propylphenyl)propanoic acid**

[3585-47-5] MW 192.26



2534.12-100-ME 100µg/mL methanol, 1x1mL

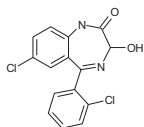
2534.12-25MG neat, 1x25mg

2534.12-100MG neat, 1x100mg

Lorazepam

2548.15 **Lorazepam**

[846-49-1] MW 321.17



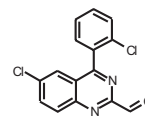
2548.15-100-ME 100µg/mL methanol, 1x1mL

2548.15-100MG neat, 1x100mg

3804.15 **6-Chloro-4-(2-chlorophenyl)-2-quinazoline carboxaldehyde**

Imp. C (EP)

[93955-15-8]



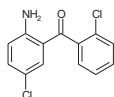
3804.15-100-ME 100µg/mL methanol, 1mL

3804.15-25MG neat, 25mg

2360.13 **2-Amino-2',5'-dichlorobenzophenone**

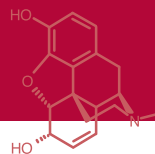
Imp. A (EP)

[2958-36-3] MW 266.13



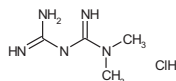
2360.13-100-ME 100µg/mL methanol, 1x1mL

2360.13-100MG neat, 1x100mg



Metformin hydrochloride

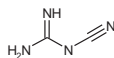
1579.4 **Metformin hydrochloride**
[1115-70-4] MW 165.63



1579.4-K-ME 1000µg/mL methanol, 1x1mL
1579.4-100MG neat, 1x100mg
1579.4-250MG neat, 1x250mg
1579.4-1G neat, 1x1g
1579.4-5G neat, 1x5g
1579.4-10G neat, 1x10g

1581.2 **Dicyanodiamide**

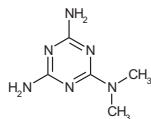
Cyanoguanidine
Imp. A (EP)
[461-58-5] MW 84.08



1581.2-100-ME 100µg/mL methanol, 1x1mL
1581.2-10MG neat, 1x10mg
1581.2-100MG neat, 1x100mg
1581.2-250MG neat, 1x250mg

2709.5 **2,4-Diamino-6-dimethylamino-1,3,5-triazine**

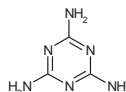
N,N-Dimethyl-1,3,5-triazine-2,4,6-triamine
Imp. C (EP)
[1985-46-2] MW 154.18



2709.5-100-ME 100µg/mL methanol, 1x1mL
2709.5-100MG neat, 1x100mg

2528.3 **1,3,5-Triazine-2,4,6-triamine**

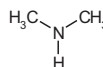
Melamine
Imp. D (EP)
[108-78-1] MW 126.12



2528.3-100-ME 100µg/mL methanol, 1x1mL
2528.3-100MG neat, 1x100mg

2705.2 **Dimethylamine**

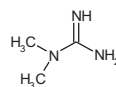
Imp. F (EP)
[124-40-3] MW 45.08



2705.2-K-MX 1000µg/mL water/metanol, 1x1mL
2705.2-90-ME 90µg/mL methanol, 1x1mL
2705.2-100MG neat, 1x100mg

2758.3 **1,1-Dimethylguanidine**

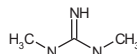
[6145-42-2] MW 87.13



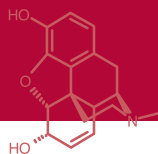
Please inquire

1580.3 **Dimethylguanidine**

[3324-71-8] MW 87.13

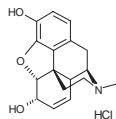


1580.3-100-ME 100µg/mL methanol, 1x1mL
1580.3-25MG neat, 1x25mg
1580.3-100MG neat, 1x100mg
1580.3-250MG neat, 1x250mg



Morphine hydrochloride

1575.17 **Morphine hydrochloride**
[52-26-6] MW 321.81



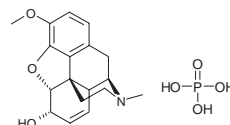
1575.17-10MG neat, 1x10mg
1575.17-100MG neat, 1x100mg
1575.17-250MG neat, 1x250mg

1574.17 **Morphine (free base)**
[57-27-2] MW 285.35

1574.17-K-ME 1000µg/mL methanol, 1x1mL
1574.17-10MG neat, 1x10mg
1574.17-25MG neat, 1x25mg
1574.17-100MG neat, 1x100mg
1574.17-250MG neat, 1x250mg
1574.17-2G neat, 1x2g

1563.18 **Codeine phosphate hemihydrate**

Reference solution
MW 397.37



1563.18-K-ME 1000µg/mL methanol, 1x1mL
1563.18-10MG neat, 1x10mg
1563.18-100MG neat, 1x100mg
1563.18-250MG neat, 1x250mg

1562.18 **Codeine**
Imp. A (EP), see page 398

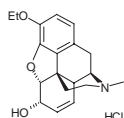
1570.34 **Pseudomorphine (free base)**

Imp. B (EP)
[125-24-6] MW 568.68

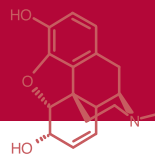
1570.34-100-ME 100µg/mL methanol, 1x1mL
1570.34-10MG neat, 1x10mg
1570.34-25MG neat, 1x25mg
1570.34-100MG neat, 1x100mg
1570.34-250MG neat, 1x250mg

Ethylmorphine hydrochloride

1576.19 **Ethylmorphine hydrochloride**
[76-58-4] MW 349.86

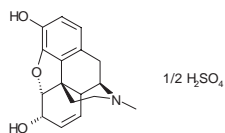


1576.19-10MG neat, 1x10mg
1576.19-100MG neat, 1x100mg
1576.19-250MG neat, 1x250mg



Morphine sulfate

1897.34 **Dimorphine sulfate**
MW 285.35

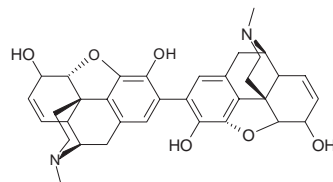


1897.34-10MG neat, 1x10mg
1897.34-100MG neat, 1x100mg
1897.34-250MG neat, 1x250mg

1563.18 **Codeine phosphate hemihydrate**
Reference solution, see page 407

1562.18 **Codeine**
Imp. A (EP), see page 398

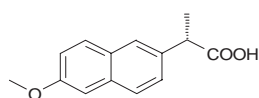
1570.34 **Pseudomorphine (free base)**
Imp. B (EP)
[125-24-6] MW 568.68



1570.34-100-ME 100µg/mL methanol, 1x1mL
1570.34-10MG neat, 1x10mg
1570.34-25MG neat, 1x25mg
1570.34-100MG neat, 1x100mg
1570.34-250MG neat, 1x250mg

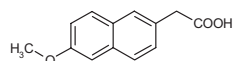
Naproxen

2538.14 **Naproxen**
[22204-53-1] MW 230.27



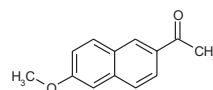
2538.14-100-ME 100µg/mL methanol, 1x1mL
2538.14-100MG neat, 1x100mg

2531.13 **(6-Methoxy-2-naphthyl) acetic acid**
Imp. I (EP)
[23981-47-7] MW 216.24



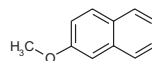
2531.13-100MG neat, 1x100mg

2529.13 **2-Acetyl-6-methoxynaphthalene**
Imp. L (EP)
[3900-45-6] MW 200.24

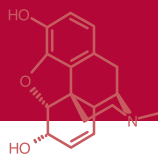


2529.13-100-ME 100µg/mL methanol, 1x1mL
2529.13-100MG neat, 1x100mg

2530.11 **2-Methoxynaphthalene**
Imp. M (EP)
[93-04-9] MW 158.20



2530.11-100-ME 100µg/mL methanol, 1x1mL
2530.11-100MG neat, 1x100mg

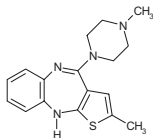


Olanzapine

3761.17

Olanzapine

[132539-06-1] MW 312.43



3761.17-100MG neat, 1x100mg

3761.17-250MG neat, 1x250mg

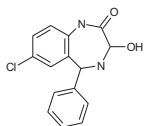
3761.17-1G neat, 1x1g

Oxazepam

2706.15

Oxazepam

[604-75-1] MW 288.74



2706.15-K-ME 1000µg/mL methanol, 1x1mL

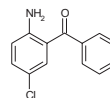
2706.15-10MG neat, 1x10mg

2706.15-25MG neat, 1x25mg

2520.13

2-Amino-5-chlorobenzophenone

[719-59-5] MW 231.68



2520.13-K-ME 1000µg/mL methanol, 1x1mL

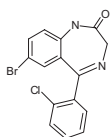
2520.13-100MG neat, 1x100mg

Phenazepam

2211.15

Phenazepam

[51753-57-2] MW 349.62

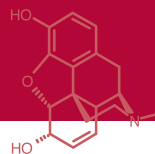


2211.15-K-T 1000µg/mL toluene, 1x1mL

2211.15-10MG neat, 1x10mg

2211.15-50MG neat, 1x50mg

2211.15-100MG neat, 1x100mg



Pholcodine

1577.23	Pholcodine [509-67-1] MW 398.51
1577.23-100-ME	100µg/mL methanol, 1x1mL
1577.23-10MG	neat, 1x10mg
1577.23-100MG	neat, 1x100mg
1577.23-250MG	neat, 1x250mg

1578.23	Pholcodine-N-oxide [433308-89-5] MW 414.51
1578.23-5MG	neat, 1x5mg
1578.23-25MG	neat, 1x25mg
1578.23-100MG	neat, 1x100mg

Proguanil hydrochloride

1582.11	Proguanil hydrochloride [637-32-1] MW 290.20
1582.11-10MG	neat, 1x10mg
1582.11-100MG	neat, 1x100mg
1582.11-250MG	neat, 1x250mg

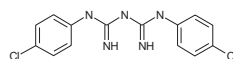
2105.8	1,5-Bis-(1-methylethyl)- biguanide [45095-69-0] MW 185.27
2105.8-100-ME	100µg/mL methanol, 1x1mL
2105.8-25MG	neat, 1x25mg
2105.8-100MG	neat, 1x100mg

1427.6	Phenol Imp. C (EP) [108-95-2] MW 94.11
--------	---

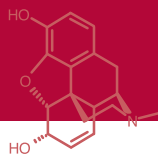


1427.6-K-ME	1000µg/mL methanol, 1x1mL
1427.6-1G	neat, 1x1g

2106.14	1,5-Bis-(4-chlorophenyl)- biguanide HCl [13590-88-0] MW 322.20
---------	--



2106.14-100-ME	100µg/mL methanol, 1x1mL
2106.14-25MG	neat, 1x25mg
2106.14-100MG	neat, 1x100mg



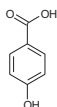
Salicylic acid

2515.7 **Salicylic acid**
2-Hydroxybenzoic acid
[69-72-7] MW 138.12



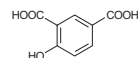
2515.7-K-ME 1000µg/mL methanol, 1x1mL
2515.7-500MG neat, 1x500mg

2514.7 **4-Hydroxybenzoic acid**
Imp. A (EP)
[99-96-7] MW 138.12



2514.7-K-ME 1000µg/mL methanol, 1x1mL
2514.7-100MG neat, 1x100mg

2539.8 **4-Hydroxyisophthalic acid**
4-Hydroxybenzene-1,3-dicarboxylic acid
Imp. B (EP)
[636-46-4] MW 182.13



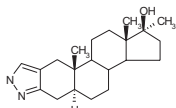
2539.8-K-ME 1000µg/mL methanol, 1x1mL
2539.8-100MG neat, 1x100mg

1427.6 **Phenol**
Imp. C (EP)
[108-95-2] MW 94.11

1427.6-K-ME 1000µg/mL methanol, 1x1mL
1427.6-1G neat, 1x1g

Stanozolol

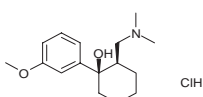
2803.21 **Stanozolol**
[10418-03-8] MW 328.50



2803.21-100MG neat, 1x100mg

Tramadol hydrochloride

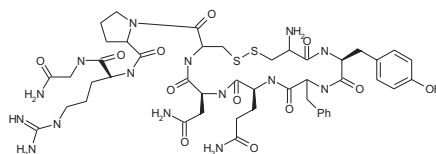
2707.16 **Tramadol hydrochloride**
[36282-47-0] MW 299.84



2707.16-100-ME 100µg/mL methanol, 1x1mL

Vasopressin

2306.46 **(Arg8)-Vasopressin acetate salt**
[113-79-1] MW 1084.25



2306.46-1MG neat, 1x1mg