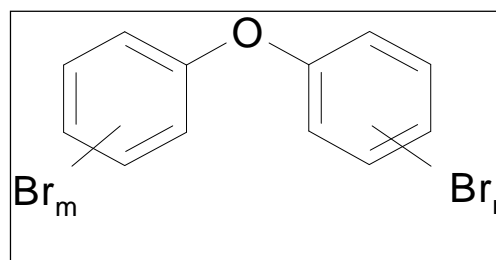




Polybrominated Diphenylethers (PBDEs)

PBDEs have been used as flame retardants over the past two decades, and are globally distributed in the environment. PBDEs accumulate in the food chain and there is a strong concern about the health effects of PBDE exposure.



Native PBDEs

Chiron offers single native PBDEs in solution for analytical purposes and as neat material up to gram quantities for toxicological studies. Mixtures are offered according to international methods and on request.

F-PBDEs® Internal standards: An overview of advantages

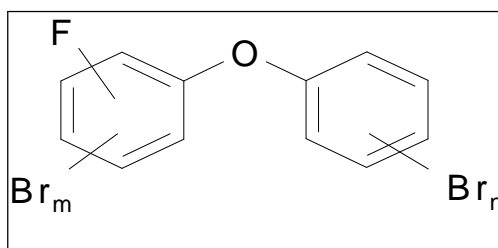
F-PBDEs® Fluorinated Internal Standards for PBDE analysis are flexible and cost-efficient

Mono- and difluorinated PBDEs are closely similar to the parent PBDEs in terms of physico-chemical properties, and are ideal internal or surrogate standards for GC-MS, GC-ECD, GC-FID and twodimensional GC. The

F-PBDE® internal standards offered by Chiron have several advantages over the more traditionally used ¹³C isotopes and unlabelled internal standards:

- Cost-efficient. Much cheaper than the ¹³C isotopes. Useful with electron impact ionization and negative ion chemical ionization.
- Gives one single, pure isotope (F has only one isotope)
- Can be used with GC-ECD detection, ¹³C can not since they coelute with the native.
- Do not discriminate from the native upon work-up.
- “Designer retention times” (*ortho*-, *meta*-, *para*-F) possible for optimal elution rate.

References: Korytar *et al.*: J.Chromatogr. A 1065, 239-249 (2005); 1100, 200-207 (2005)
Liu *et al.*: Chemosphere 64, 250-263 (2006)
Fiksdahl *et al.*: Tetrahedron 62, 3564-72 (2006)





ISO 22032: 2006

Water quality – Determination of selected polybrominated diphenyl ethers in sediments and sewage sludge – Method using extraction and gas chromatography/mass spectrometry.

Native ISO 22032 PBDEs:

IUPAC No.	Compound	Cat. No.	Cat. No.
Tetrabromo: BDE-47	2,2',4,4'-Tetrabromodiphenyl ether	1962.12-50-IO	1962.12-5MG
BDE-99	2,2',4,4',5-Pentabromodiphenyl ether	1967.12-50-IO	1967.12-5MG
BDE-100	2,2',4,4',6-Pentabromodiphenyl ether	1968.12-50-IO	1968.12-5MG
Hexabromo: BDE-153	2,2',4,4',5,5'-Hexabromodiphenyl ether	1971.12-50-IO	1971.12-5MG
BDE-154	2,2',4,4',5,6'-Hexabromodiphenyl ether	1972.12-50-IO	1972.12-5MG
Heptabromo: BDE-183	2,2',3,4,4',5',6-Heptabromodiphenyl ether	1973.12-50-IO	1973.12-5MG
Octabromo: BDE-205	2,3,3',4,4',5,5',6-Octabromodiphenyl ether	2647.12-50-IO	-
Decabromo: BDE-209	Decabromodiphenyl ether	1811.12-50-IO	1811.12-5MG
Multiple components	ISO 22032 PBDEs, 10 µg/mL each in isooctane	S-4535-10-IO	-
KIT	ISO 22032 PBDE single components, solutions Kit	8573.8-KIT	-

Solutions of single reference substances, and multiple components solution, 50µg/mL in isooctane, 1 mL or as neat.

Internal Standards (IS) for ISO 22032: F-PBDEs®

Electron impact or chemical ionization.

IUPAC No.	IS for BDE No.	Compound	Cat. No.
Tetrabromo: 6-F-BDE-47	47	6-Fluoro-2,2',4,4'-tetrabromodiphenyl ether	2161.12-50-T
5,5'-F ₂ -BDE-47	47	5,5'-Difluoro-2,2',4,4'-tetrabromodiphenyl ether	2506.12-50-T
Pentabromo: 3,6-F ₂ -BDE-99	99,100	3,6-Difluoro-2,2',4,4',5-pentabromodiphenyl ether	2505.12-50-IO
3-F-BDE-100	99, 100	3-Fluoro-2,2',4,4',6-pentabromodiphenyl ether	2163.12-50-T
Hexabromo: 4'-F-BDE-160	153, 154,183	4'-Fluoro-2,3,3',4,5,6-hexabromodiphenyl ether	1929.12-50-T
Heptabromo: 3-F-BDE-183	183	3-Fluoro-2,2',3,4,4',5',6-heptabromodiphenyl ether	2166.12-50-T
Octabromo: 2,4'-F ₂ -BDE-201	205, 209	2,4'-Difluoro-2,3,3',4,5,5',6,6'-octabromodiphenyl ether	2167.12-50-T
Nonabromo: 4'-F-BDE-208	205, 209	4'-Fluoro-2,2',3,3',4,5,5',6,6'-nonabromodiphenyl ether	2168.12-50-T
Multiple components		Multicomponent Stock Solution of Native Substances: ISO 22032 PBDEs, 50 µg/mL each	S-4388-50-IO
KIT		ISO 22032 F-PBDE® single components, solutions	8574.8.KIT

Solutions of single internal standards and multiple components solution, 50µg/mL in isooctane or toluene, 1 mL

Internal Standards (IS) for ISO 22032 PBDEs (negative ion chemical ionization):

IUPAC No.	IS for BDE No.	Compound	Cat. No.
Tetrabromo: BDE-77	47, 99,100	3,3',4,4'-Tetrabromodiphenyl ether	1991.12-50-IO
Hexabromo: BDE-181	153, 154,183	2,2',3,4,4',5,5'-6-Hexabromodiphenyl ether	2652.12-50-IO

Solutions of single internal standards and multiple component solution, 50µg/mL in isooctane, 1 mL.



EPA METHOD 1614, 2007

Brominated Diphenyl Ethers in Water Soil, Sediments and Tissue by HRGC/HRMS

Native PBDEs

Most relevant with respect to EPA Method 1614 (BDEs of primary interest as determined at the 4th Annual Workshop on Brominated Flame Retardants in the Environment, 2002)

IUPAC No.	Compound	Cat No.	Cat No. neat
BDE-28	2,4,4'-Tribromodiphenyl ether	1961.12-50-IO	1961.12-5MG
BDE-47	2,2',4,4'-Tetrabromodiphenyl ether	1962.12-50-IO	1962.12-5MG
BDE-99	2,2',4,4',5-Pentabromodiphenyl ether	1967.12-50-IO	1967.12-5MG
BDE-100	2,2',4,4',6-Pentabromodiphenyl ether	1968.12-50-IO	1968.12-5MG
BDE-153	2,2',4,4',5,5'-Hexabromodiphenyl ether	1971.12-50-IO	1971.12-5MG
BDE-154	2,2',4,4',5,6'-Hexabromodiphenyl ether	1972.12-50-IO	1972.12-5MG
BDE-183	2,2',3,4,4',5',6-Heptabromodiphenyl ether	1973.12-50-IO	1973.12-5MG
BDE-209	Decabromodiphenyl ether	1811.12-50-IO	1811.12-5MG
Multiple components	EPA 1614 PBDEs, 20 µg/mL each	S-4390-20-IO	-
KIT	EPA 1614 PBDE single components, solutions	8575.8-KIT	-

Solutions of single reference substances, 50 µg/mL in isooctane ,1 mL or as 5 mg neat

Internal Standards (IS) for EPA 1614 PBDEs:

IUPAC No.	IS for BDE No.	Compound	Cat. No.
Monobromo: 4'-F-BDE-2	3	3-Bromo-4'-fluorodiphenyl ether	1608.12-50-IO
Dibromo: 3'-F-BDE-7	15	3'-Fluoro-2,4-dibromodiphenyl ether	2258.12-50-IO
3'-F-BDE-12	15	3'-Fluoro-3,4-dibromodiphenyl ether	2257.12-50-IO
Tribromo: 2'-F-BDE-28	28	2'-Fluoro-2,4,4'-tribromodiphenyl ether	2160.12-50-T
4'-F-BDE-25	28	4'-Fluoro-2,3',4-tribromodiphenyl ether	1926.12-50-IO
4'-F-BDE-27	28	4'-Fluoro-2,3',6-tribromodiphenyl ether	1927.12-50-IO
Tetrabromo: 6-F-BDE-47	47	6-Fluoro-2,2',4,4'-tetrabromodiphenyl ether	2161.12-50-T
5,5'-F ₂ -BDE-47	47	5,5'-Difluoro-2,2',4,4'-tetrabromodiphenyl ether	2506.12-50-IO
6-F-BDE-66	47	6-Fluoro-2,3',4,4'-tetrabromodiphenyl ether	2162.12-50-IO
4'-F-BDE-69	47	4'-Fluoro-2,3',4,6-tetrabromodiphenyl ether	1928.12-50-IO
Pentabromo: 3,6-F ₂ -BDE-99	99, 100	3,6-Difluoro-2,2',4,4',5-pentabromodiphenyl ether	2505.12-50-IO
3-F-BDE-100	99, 100	3-Fluoro-2,2',4,4',6-pentabromodiphenyl ether	2163.12-50-T
3-F-BDE-119	99, 100	3-Fluoro-2,3',4,4',6-pentabromodiphenyl ether	2164.12-50-IO
3,5-F ₂ -BDE-119	99, 100	3,5-Difluoro-2,3',4,4',6-pentabromodiphenyl ether	2504.12-50-IO
5,6-F ₂ -BDE-85	99,100	5,6-Difluoro-2,2',3,4,4'-pentabromodiphenyl ether	2503.12-50-IO
Hexabromo: 4'-F-BDE-160	138,153,154	4'-Fluoro-2,3,3',4,5,6-hexabromodiphenyl ether	1929.12-50-T
Heptabromo: 3-F-BDE-183	183	3-Fluoro-2,2',3,4,4',5',6-Heptabromodiphenyl ether	2166.12-50-T
Nonabromo: 4'-F-BDE-208	209	4'-Fluoro-2,2',3,3',4,5,5',6,6'-nonabromodiphenyl ether	2168.12-50-IO
Multiple components		EPA 1614 F-PBDEs®	Please inquire
KIT: Selection of 8 or more single components:		EPA 1614 F-PBDEs® single components, solutions	Please inquire

Solutions of single internal standards and multiple component solution, 50µg/mL in isooctane or toluene , 1 mL or as neat.

Native Lake Michigan PBDEs:

IUPAC No.	Compound	Cat. No.	Cat. No. neat
Tribromo: BDE-28	2,4,4'-Tribromodiphenyl ether	1961.12-50-IO	1961.12-5MG
Tetrabromo: BDE-47	2,2',4,4'-Tetrabromodiphenyl ether	1962.12-50-IO	1962.12-5MG
BDE-66	2,3',4,4'-Tetrabromodiphenyl ether	1964.12-50-IO	1964.12-5MG
Pentabromo: BDE-85	2,2',3,4,4'-Pentabromodiphenyl ether	1966.12-50-IO	1966.12-5MG
BDE-99	2,2',4,4',5'-Pentabromodiphenyl ether	1967.12-50-IO	1967.12-5MG
BDE-100	2,2',4,4',6'-Pentabromodiphenyl ether	1968.12-50-IO	1968.12-5MG
Hexabromo: BDE-138	2,2',3,4,4',5'-Hexabromodiphenyl ether	1970.12-50-IO	1970.12-5MG
BDE-153	2,2',4,4',5,5'-Hexabromodiphenyl ether	1971.12-50-IO	1971.12-5MG
BDE-154	2,2',4,4',5,6'-Hexabromodiphenyl ether	1972.12-50-IO	1972.12-5MG
Multiple components	Lake Michigan PBDEs, 10 µg/mL each	S-4391-10-IO	-
KIT	Lake Michigan single components, solutions	2653.9KIT	-

Solutions of single reference substances and multiple components solution, 50 µg/mL in isoctane, 1 mL or as neat.

Internal Standards (IS) for Lake Michigan PBDEs: "Lake Michigan F-PBDEs ®"

IUPAC No.	IS for BDE No.	Compound	Cat. No.
Tribromo: 2'-F-BDE-28	28	2'-Fluoro-2,4,4'-tribromodiphenyl ether	2160.12-50-T
Tetrabromo: 6-F-BDE-47	47	6-Fluoro-2,2',4,4'-tetrabromodiphenyl ether	2161.12-50-T
5,5'-F ₂ -BDE-47	47	5,5'-Difluoro-2,2',4,4'-tetrabromodiphenyl ether	2506.12-50-IO
6-F-BDE-66	66	6-Fluoro-2,3',4,4'-tetrabromodiphenyl ether	2162.12-50-IO
Pentabromo: 5,6-F ₂ -BDE-85	85	5,6-Difluoro-2,2',3,4,4'-pentabromodiphenyl ether	2503.12-50-IO
3,6-F ₂ -BDE-99	99, 100	3,6-Difluoro-2,2',4,4',5'-pentabromodiphenyl ether	2505.12-50-IO
3-F-BDE-100	99,100	3-Fluoro-2,2',4,4',6'-pentabromodiphenyl ether	2163.12-50-T
Hexabromo: 4'-F-BDE-160	138, 153, 154	4'-Fluoro-2,3,3',4,5,6-hexabromodiphenyl ether	1929.12-50-T
Multiple components		Lake Michigan F-PBDEs® Includes 2161.12 but not 2506.12	Please inquire
KIT, 5 or more of above F-PBDEs®		Lake Michigan F-PBDEs®, single components	Please inquire

Solutions of single internal standards and multiple components solution, 50 µg/mL in isoctane or toluene, 1 mL.

EPA 527.1: 2005

Drinking water – Pesticides and PBDEs by GC-MS

Determination of selected pesticides and flame retardants in drinking water by solid phase extraction and capillary column gas chromatography/mass spectrometry.

IUPAC No.	Compound	Cat. No.	Cat. No. neat
PBB-153	2,2',4,4',5,5'-Hexabromobiphenyl	3108.12-50-HX	-
BDE-47	2,2',4,4'-Tetrabromodiphenyl ether	1962.12-50-IO	1962.12-5MG
BDE-99	2,2',4,4',5'-Pentabromodiphenyl ether	1967.12-50-IO	1967.12-5MG
BDE-100	2,2',4,4',6'-Pentabromodiphenyl ether	1968.12-50-IO	1968.12-5MG
BDE-153	2,2',4,4',5,5'-Hexabromodiphenyl ether	1971.12-50-IO	1971.12-5MG
Multiple components	EPA 527 Mix 3, BDE congeners and hexabromobiphenyl, 50 µg/mL each in isoctane:ethyl acetate	S-4484-50-MX	-

Solutions of single reference substances and multiple components solution, 50 µg/mL in hexane or isoctane, 1 mL or as neat.



Native PBDEs; complete list of most relevant PBDEs:

IUPAC No.	Compound	Cat No.
BDE-25 *	2,3',4'-Tribromodiphenyl ether	1960.12-50-IO
BDE-28 *	2,4,4'-Tribromodiphenyl ether	1961.12-50-IO
BDE-35	3,3',4'-Tribromodiphenyl ether	2116.12-50-IO
BDE-47 *	2,2',4,4'-Tetrabromodiphenyl ether	1962.12-50-IO
BDE-49 *	2,2',4,5'-Tetrabromodiphenyl ether	1963.12-50-IO
BDE-66 *	2,3',4,4'-Tetrabromodiphenyl ether	1964.12-50-IO
BDE-71 *	2',3',4',6'-Tetrabromodiphenyl ether	1965.12-50-IO
BDE-75 *	2,4,4',6'-Tetrabromodiphenyl ether	1990.12-50-IO
BDE-77 *	3,3',4,4'-Tetrabromodiphenyl ether	1991.12-50-IO
BDE-85 *	2,2',3,4,4'-Pentabromodiphenyl ether	1966.12-50-IO
BDE-99 *	2,2',4,4',5'-Pentabromodiphenyl ether	1967.12-50-IO
BDE-100 *	2,2',4,4',6'-Pentabromodiphenyl ether	1968.12-50-IO
BDE-118	2,3',4,4',5'-Pentabromodiphenyl ether	2867.12-50-IO
BDE-119 *	2,3',4,4',6'-Pentabromodiphenyl ether	1969.12-50-IO
BDE-138 *	2,2',3,4,4',5'-Hexabromodiphenyl ether	1970.12-50-IO
BDE-153 *	2,2',4,4',5,5'-Hexabromodiphenyl ether	1971.12-50-IO
BDE-154 *	2,2',4,4',5,6'-Hexabromodiphenyl ether	1972.12-50-IO
BDE-181	2,2',3,4,4',5,6'-Heptabromodiphenyl ether	2652.12-50-IO
BDE-183 *	2,2',3,4,4',5',6'-Heptabromodiphenyl ether	1973.12-50-IO
BDE-190 *	2,3,3',4,4',5,6'-Heptabromodiphenyl ether	1992.12-50-IO
BDE-195 *	2,3,3',4,4',5,5',6'-Octabromodiphenyl ether	2486.12-50-IO
BDE-203 *	2,2',3,4,4',5,5',6'-Octabromodiphenyl ether	1975.12-50-IO
BDE-205 *	2,3,3',4,4',5,5',6'-Octabromodiphenyl ether	2647.12-50-IO
BDE-209 *	Decabromodiphenyl ether	1811.12-50-IO

Solutions of single reference substances, 50µg/mL in isooctane (1 mL)

* These items can also be delivered in 5 mg neat.

Internal Standard (IS) F-PBDEs ®: Complete list

IUPAC No.	Compound	Cat. No.	
Zero:	2-F-BDE-0	2-Fluorodiphenyl ether	1604.12-50-IO
	4-F-BDE-0	4-Fluorodiphenyl ether	1605.12-50-IO
Monobromo:	4'-F-BDE-2	3-Bromo-4'-fluorodiphenyl ether	1608.12-50-IO
Dibromo:	3'-F-BDE-7	3'-Fluoro-2,4-dibromodiphenyl ether	2258.12-50-IO
	3'-F-BDE-12	3'-Fluoro-3,4-dibromodiphenyl ether	2257.12-50-IO
Tribromo:	4'-F-BDE-25	4'-Fluoro-2,3',4-tribromodiphenyl ether	1926.12-50-IO
	4'-F-BDE-27	4'-Fluoro-2,3',6-tribromodiphenyl ether	1927.12-50-IO
	2'-F-BDE-28	2'-Fluoro-,2,4,4'-tribromodiphenyl ether	2160.12-50-T
Tetrabromo:	6-F-BDE-47	6-Fluoro-2,2',4,4'-tetrabromodiphenyl ether	2161.12-50-T
	5,5'-F ₂ -BDE-47	5,5'-Difluoro-2,2',4,4'-tetrabromodiphenyl ether	2506.12-50-IO
	6-F-BDE-66	6-Fluoro-2,3',4,4'-tetrabromodiphenyl ether	2162.12-50-IO
	4'-F-BDE-69	4'-Fluoro-2,3',4,6-tetrabromodiphenyl ether	1928.12-50-IO
Pentabromo:	5,6-F ₂ -BDE-85	5,6-Difluoro-2,2',3,4,4'-pentabromodiphenyl ether	2503.12-50-IO
	3,6-F ₂ -BDE-99	3,6-Difluoro-2,2',4,4',5-pentabromodiphenyl ether	2505.12-50-IO
	3-F-BDE-100	3-Fluoro-2,2',4,4',6-pentabromodiphenyl ether	2163.12-50-T
	3-F-BDE-119	3-Fluoro-2,3',4,4',6-pentabromodiphenyl ether	2164.12-50-IO
	3,5-F ₂ -BDE-119	3,5-Difluoro-2,3',4,4',6-pentabromodiphenyl ether	2504.12-50-IO
Hexabromo:	4'-F-BDE-160	4'-Fluoro-2,3,3',4,5,6-hexabromodiphenyl ether	1929.12-50-T
Heptabromo:	3-F-BDE-183	3-Fluoro-2,2',4,4',5,5',6-heptabromodiphenyl ether	2166.12-50-T
Octabromo:	2,4'-F ₂ -BDE-201	2,4'-Difluoro-2,3,3',4,5,5',6,6'-octabromodiphenyl ether	2167.12-50-T
Nonabromo:	4'-F-BDE-208	4'-Fluoro-2,2',3,3',4,5,5',6,6'-nonabromodiphenyl ether	2168.12-50-IO

Solutions of single reference substances, 50µg/mL in isooctane or toluene, 1 mL.



Flame retardants other than PBDE`s

PBBs (polybromobiphenyls)			
PBB-1	2-Bromobiphenyl	3089.12-50-IO	50µg/mL
PBB-2	3-Bromobiphenyl	3090.12-50-IO	50µg/mL
PBB-3	4-Bromobiphenyl	3091.12-50-IO	50µg/mL
PBB-4	2,2'-Dibromobiphenyl	3092.12-50-IO	50µg/mL
PBB-7	2,4-Dibromobiphenyl	3093.12-50-IO	50µg/mL
PBB-9	2,5-Dibromobiphenyl	3094.12-50-IO	50µg/mL
PBB-10	2,6-Dibromobiphenyl	3095.12-50-IO	50µg/mL
PBB-15	4,4'-Dibromobiphenyl	3096.12-50-IO	50µg/mL
PBB-18	2,2',5-Tribromobiphenyl	3097.12-50-IO	50µg/mL
PBB-26	2,3',5-Tribromobiphenyl	3098.12-50-IO	50µg/mL
PBB-31	2,4',5-Tribromobiphenyl	3099.12-50-IO	50µg/mL
PBB-29	2,4,5-Tribromobiphenyl	2664.12-50-IO	50µg/mL
PBB-30	2,4,6-Tribromobiphenyl	2744.12-35-IO	35µg/mL
PBB-30	2,4,6-Tribromobiphenyl	2744.12-50-IO	50µg/mL
PBB-38	3,4,5-Tribromobiphenyl	3101.12-50-IO	50µg/mL
PBB-49	2,2',4,5'-Tetrabromobiphenyl	3102.12-50-IO	50µg/mL
PBB-52	2,2',5,5'-Tetrabromobiphenyl	3103.12-50-IO	50µg/mL
PBB-56	2,2',5,6'-Tetrabromobiphenyl	3104.12-50-IO	50µg/mL
PBB-80	3,3',5,5'-Tetrabromobiphenyl	3105.12-50-IO	50µg/mL
PBB-101	2,2',4,5',5'-Pentabromobiphenyl	3106.12-50-IO	50µg/mL
PBB-103	2,2',4,5',6'-Pentabromobiphenyl	3107.12-50-IO	50µg/mL
PBB-153	2,2',4,4',5,5'-Hexabromobiphenyl	3108.12-50-HX	50µg/mL
PBB-155	2,2',4,4',6,6'-Hexabromobiphenyl	3110.12-50-IO	50µg/mL
PBB-169	3,3',4,4',5,5'-Hexabromobiphenyl	3109.12-10-IO	10µg/mL
PBB-209	Decabromodiphenyl	2677.12-50-IO	50µg/mL
PBB	Octabromodiphenyl, techn.	2679.12-50-IO	50µg/mL

Bromophenols			
	2-Bromophenol	3822.6-K-IP	1000µg/mL
	4-Bromophenol	2383.6-K-IP	1000µg/mL
	2,3-Dibromophenol	3721.6-K-IP	1000µg/mL
	2,4-Dibromophenol	2061.6-K-IP	1000µg/mL
	2,5-Dibromophenol	2470.6-K-IP	1000µg/mL
	2,6-Dibromophenol	2472.6-K-IP	1000µg/mL
	2,3,4-Tribromophenol	2507.6-K-IP	1000µg/mL
	2,3,6-Tribromophenol	2471.6-K-IP	1000µg/mL
	2,4,5-Tribromophenol	2508.6-K-IP	1000µg/mL
	2,4,6-Tribromophenol	2060.6-K-IP	1000µg/mL
	2,3,4,6-Tetrabromophenol	2509.6-K-IP	1000µg/mL
	Pentabromophenol	2672.6-50-IO	50µg/mL
	Bromophenol Kit (1000µg/mL each)	2384.12-KIT	

Other brominated flame retardants			
	4-Chloro-3-methylphenol	2071.7-K-IP	1000µg/mL
	Decabromodiphenylethane	2670.14-50-CB	50µg/mL
	Dibromoneopentylglycol	2671.5-50-IP	50µg/mL
	Hexabromobenzene	2678.6-50-IO	50µg/mL
	1,2,3,4,5,6-Hexabromocyclohexane	1894.6-50-IO	50µg/mL
	1,2,5,6,9,10-Hexabromocyclododecane	1893.12-K-T	1000µg/mL
	Pentabromotoluene	2673.7-50-IO	50µg/mL
	3,3',5,5'-Tetrabromobisphenol A	2674.15-50-IO	50µg/mL
	3,3',5,5'-Tetrabromobisphenol A dimethyl ether	2675.17-50-IO	50µg/mL
	Tetrabromophthalic anhydride	2676.8-50-IO	50µg/mL
	Tetradecabromo-1,4-diphenoxybenzene	1812.18-50-CY	50µg/mL
TEPA	Tris-(aziridiny)-phosphineoxide	2209.6-100-IO	100µg/mL
TEPA	Tris-(aziridiny)-phosphineoxide	2209.6-K-IO	1000µg/mL
TEPA	Tris-(aziridiny)-phosphineoxide	2209.6-10MG	neat
TEPA	Tris-(aziridiny)-phosphineoxide	2209.6-100MG	neat
TEPA	Tris-(aziridiny)-phosphineoxide	2209.6-1G	neat