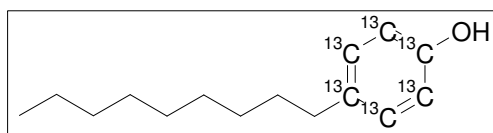
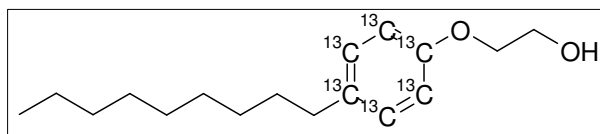


**NEW: NOW AVAILABLE****ISO/DIS 18857-2: 2008**

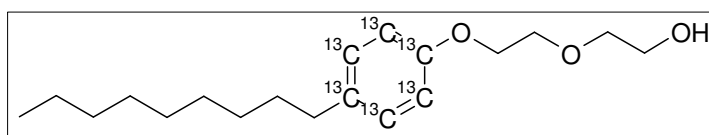
Water quality – Determination of selected alkylphenols

Determination of alkylphenols, alkylphenol ethoxylates and bisphenol A – Method for non-filtered samples using solidphase extraction and gas chromatography with mass selective detection after derivation.**¹³C Labelled Internal Standard: n-Nonylphenoethoxylates- Ring¹³C₆**

Cat. No. 8625.15



Cat. No. 8626.17



Cat. No. 8627.19

Internal standards for ISO 18857-2	Cat. No.
4-n-Nonylphenol-Ring ¹³ C ₆	8625.15-10-IO
Ethylene glycol mono(4-n-nonylphenyl)ether- ¹³ C ₆	8626.17-10-IO
Diethylene glycol mono(4-n-nonylphenyl) ether- ¹³ C ₆	8627.19-10-IO

Delivered in 10µg/mL in isooctane, 1 mL

Analytes determined by this method:

	C0-C1 Phenols				C6 Phenols	
1427.6-1G	Phenol	1g		1806.12-1G	2-Phenylphenol	1g
1403.7-1G	<i>o</i> -Cresol	1g		1807.12-1G	3-Phenylphenol	1g
1404.7-1G	<i>m</i> -Cresol	1g		1808.12-1G	4-Phenylphenol	1g
1358.7-1G	<i>p</i> -Cresol	1g		1439.12-1G	2-/4-Cyclohexylphenol	1g
1637.4-KIT	Phenol C0-C1 Kit (neat)	Kit		1438.12-1G	4-Cyclohexylphenol	1g
	C2 Phenols			1795.12-K-IO	2,4-Diisopropylphenol	1mL
1405.8-1G	2,3-Dimethylphenol	1g		1520.12-K-IO	2,5-Diisopropylphenol	1mL
1406.8-1G	2,4-Dimethylphenol	1g		1434.12-250MG	2,6-Diisopropylphenol	250mg
1407.8-1G	2,5-Dimethylphenol	1g		1436.12-1G	2- <i>tert</i> -Butyl-4,6-dimethylphenol	1g
1365.8-1G	2,6-Dimethylphenol	1g		1435.12-1G	2- <i>tert</i> -Butyl-4-ethylphenol	1g
1409.8-1G	3,4-Dimethylphenol	1g		1437.12-1G	4- <i>n</i> -Hexylphenol	1g
1360.8-1G	3,5-Dimethylphenol	1g		1642.11-KIT	Phenol C6 Kit	Kit
1410.8-1G	2-Ethylphenol	1g			C7 Phenols	
1364.8-1G	3-Ethylphenol	1g		2388.13-1G	2-Benzylphenol	1g
1411.8-1G	4-Ethylphenol	1g		2389.13-1G	4-Benzylphenol	1g
1638.9-KIT	Phenol C2 Kit	Kit		1503.13-250MG	2-Cyclohexyl-5-methylphenol	250mg
	C3 Phenols			2908.13-K-IO	2-Methyl-4- <i>tert</i> -hexylphenol	1mL
1412.9-1G	2,3,5-Trimethylphenol	1g		1440.13-1G	4- <i>n</i> -Heptylphenol	1g
1413.9-1G	2,3,6-Trimethylphenol	1g		1643.5-KIT	Phenol C7 Kit	Kit
1362.9-1G	2,4,6-Trimethylphenol	1g			C8 Phenols	
1414.9-250MG	3,4,5-Trimethylphenol	250mg		2439.14-K-IP	2-Benzyl-4-methylphenol	1000µg/mL
1418.9-1G	2-Isopropylphenol	1g		1515.14-K-IO	2,4-Di- <i>sec</i> -butylphenol	1000µg/mL
1415.9-1G	2- <i>n</i> -Propylphenol	1g		1441.14-1G	2,6-Di- <i>sec</i> -butylphenol	1g
1516.9-K-IO	3-Ethyl-5-methylphenol	1mL		1442.14-1G	2,4-Di- <i>tert</i> -butylphenol	1g
1419.9-250MG	3-Isopropylphenol	250mg		1443.14-1G	2,6-Di- <i>tert</i> -butylphenol	1g
1416.9-1G	3- <i>n</i> -Propylphenol	1g		1444.14-1G	3,5-Di- <i>tert</i> -butylphenol	1g
1420.9-1G	4-Isopropylphenol	1g		1445.14-1G	4- <i>n</i> -Octylphenol	1g
1417.9-1G	4- <i>n</i> -Propylphenol	1g		1446.14-1G	4- <i>tert</i> -Octylphenol	1g
1639.11-KIT	Phenol C3 Kit	Kit		1644.8-KIT	Phenol C8 Kit	Kit
	C4 Phenols				C9 Phenols	
1357.10-1G	4- <i>n</i> -Butylphenol	1g		1448.15-K-IO	2,6-Di- <i>tert</i> -butyl-4-methylphenol	1mL
1421.10-1G	2- <i>sec</i> -Butylphenol	1g		1522.15-K-IO	2-Methyl-4- <i>tert</i> -octylphenol	1mL
1422.10-1G	4- <i>sec</i> -Butylphenol	1g		1521.15-K-IO	4,6-Di- <i>tert</i> -butyl-2-methylphenol	1000µg/mL
1359.10-1G	2- <i>tert</i> -Butylphenol	1g		1450.15-K-IO	4- <i>n</i> -Nonylphenol	1000µg/mL
1361.10-1G	3- <i>tert</i> -Butylphenol	1g		1450.15-5K-IO	4- <i>n</i> -Nonylphenol	5000µg/mL
1423.10-1G	4- <i>tert</i> -Butylphenol	1g		1450.15-5K-IO	4- <i>n</i> -Nonylphenol	5000µg/mL
1428.10-1G	2-Isopropyl-5-methylphenol	1g		1450.15-250MG	4- <i>n</i> -Nonylphenol	250mg
1424.10-1G	4-Isopropyl-3-methylphenol	1g		2044.15-K-IO	4-Nonylphenol, mixture of isomers	1000µg/mL
1425.10-250MG	5-Isopropyl-2-methylphenol	250mg		2365.15-K-IO	4-Nonylphenol, mixture of isomers, Type B	1000µg/mL
1426.10-1G	5-Isopropyl-3-methylphenol	1g		1645.6-KIT	Phenol C9 Kit	Kit
1640.10-KIT	Phenol C4 Kit	Kit			C10+ Phenols	
	C5 Phenols			1687.16-1G	4- <i>tert</i> -Butyl-2-phenylphenol	1g
1363.11-250MG	4- <i>n</i> -Pentylphenol	250mg		1455.16-250MG	2,4-Bis(1-methylbutyl)phenol	250mg
1517.11-K-IO	2-(1-Methylbutyl)phenol	1000µg/mL		1523.16-K-IO	2,4-Dimethyl-6-isooctylphenol	1000µg/mL
1518.11-K-IO	4-Isopentylphenol (two isomers)	1000µg/mL		1453.16-1G	2,4-Di- <i>tert</i> -pentylphenol	1g
1433.11-1G	4- <i>tert</i> -Amylphenol	1g		1452.16-1G	2,6-Di- <i>tert</i> -butyl-4-ethylphenol	1g
1430.11-1G	2- <i>tert</i> -Butyl-4-methylphenol	1g		1454.16-100MG	4- <i>tert</i> -Butyl-2,6-diisopropylphenol	100mg
1431.11-1G	2- <i>tert</i> -Butyl-5-methylphenol	1g		2436.18-K-IO	2- <i>n</i> -Dodecylphenol	1000µg/mL
1432.11-1G	2- <i>tert</i> -Butyl-6-methylphenol	1g		8109.18-250MG	4-Dodecylphenol, mixture of isomers	250mg
1429.11-1G	4- <i>tert</i> -Butyl-2-methylphenol	1g		8108.18-250MG	2,4,6-Tri- <i>tert</i> -butylphenol	250mg
1519.11-K-IO	5- <i>tert</i> -Butyl-2-methylphenol	1000µg/mL		2437.19-K-IO	2- <i>n</i> -Dodecyl- <i>p</i> -cresol	1000µg/mL
1641.9-KIT	Phenol C5 Kit	Kit		2438.19-K-IO	4- <i>n</i> -Dodecyl- <i>o</i> -cresol	1000µg/mL
				1646.11-KIT	Phenol C10+ Kit	Kit

